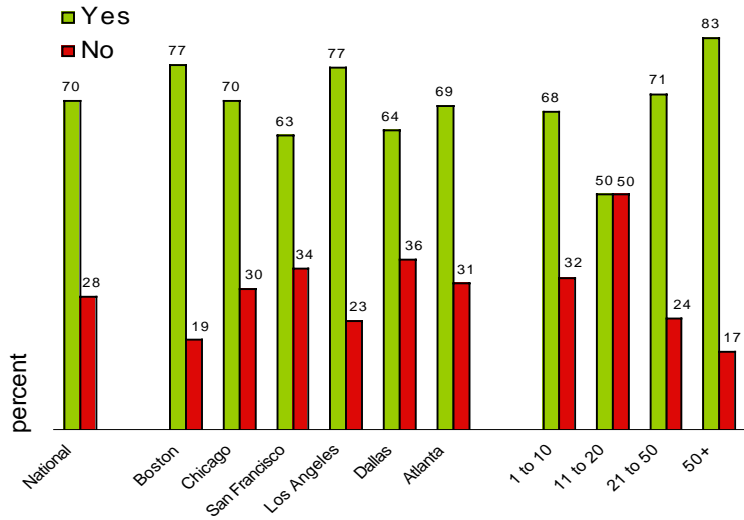
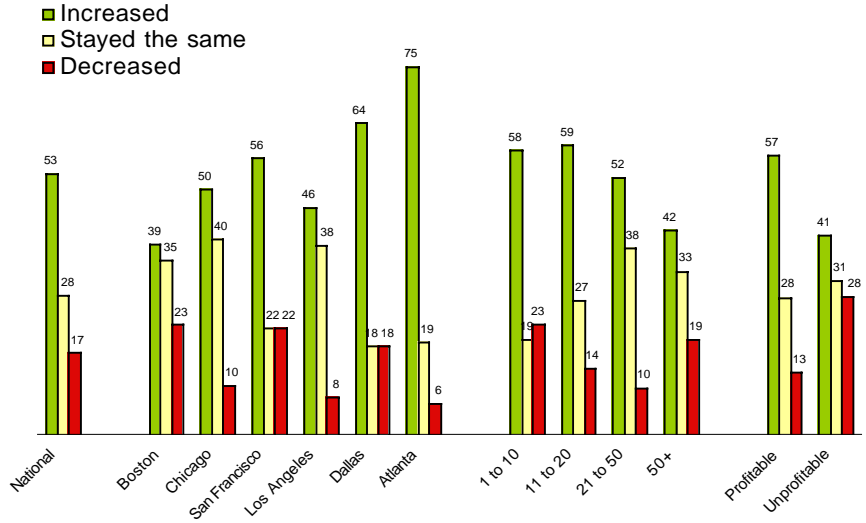


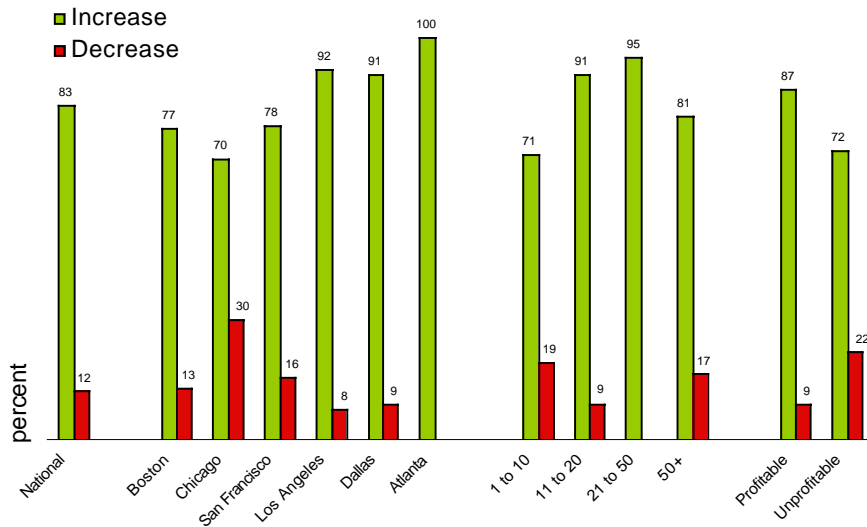
DID YOUR COMPANY HAVE A PROFITABLE 2002?



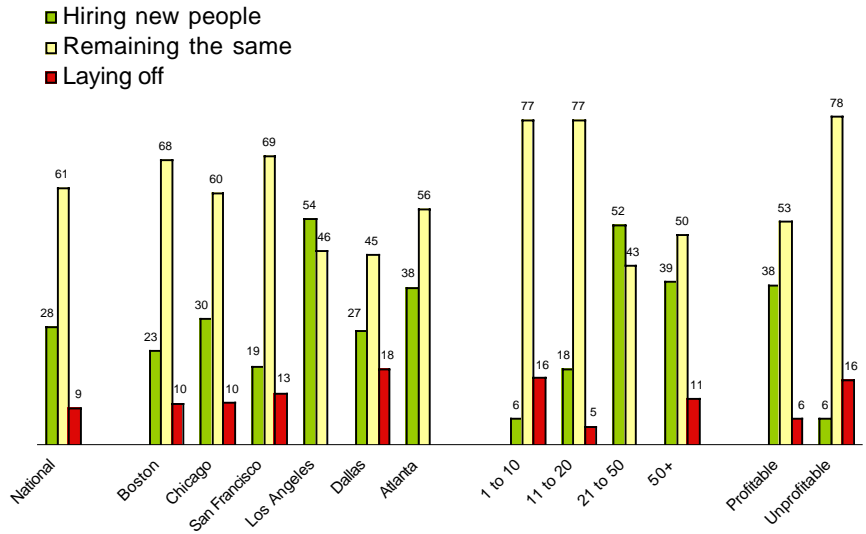
HAS BUSINESS _____ IN THE LAST TWO WEEKS?

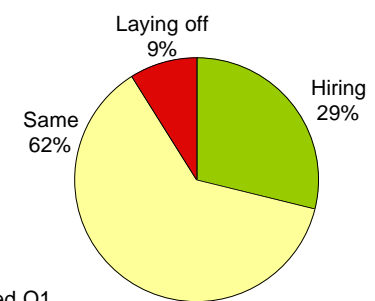
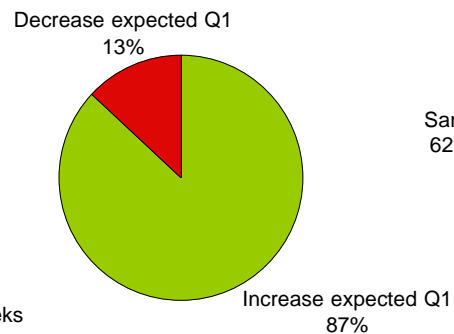
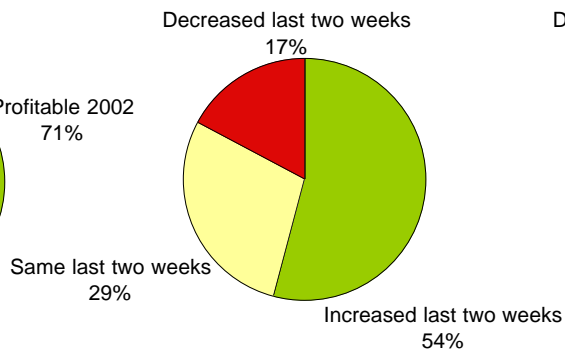
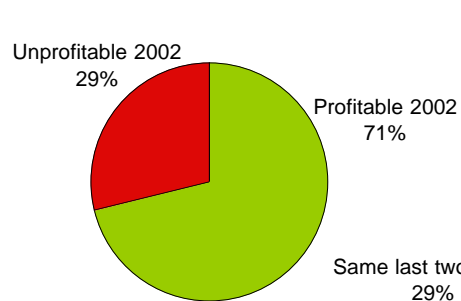
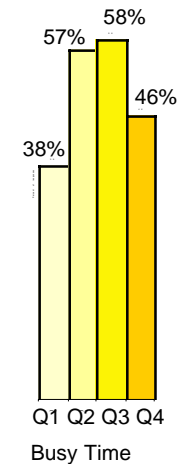
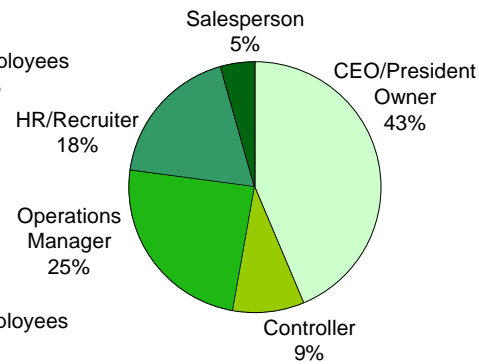
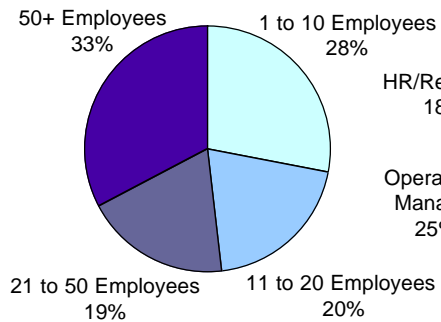
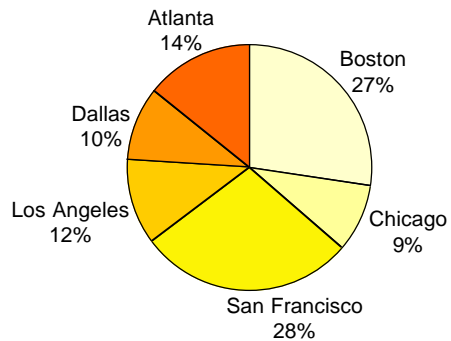


DO YOU EXPECT YOUR SALES TO _____ DURING THE FIRST QUARTER OF 2003?



IS YOUR COMPANY _____ ?





PRINTSTAFF SURVEY 2003 Q1 **RESPONDENT PROFILE**

PROFITABLE 2002
70% of All Respondents

UNPROFITABLE 2002
28% of All Respondents

