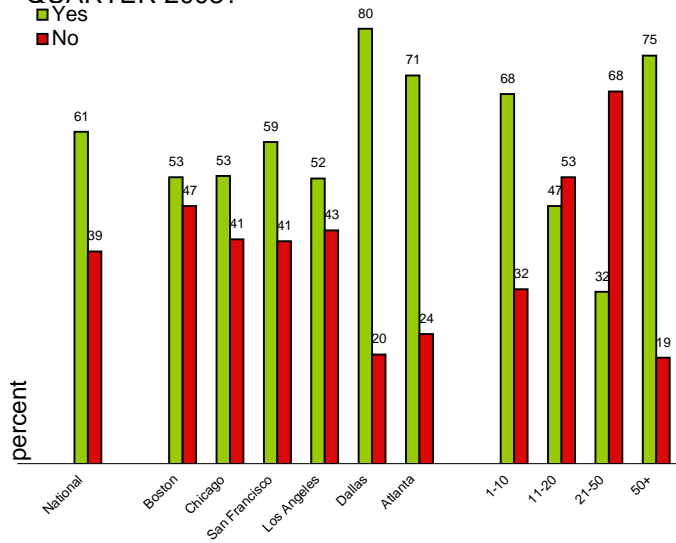


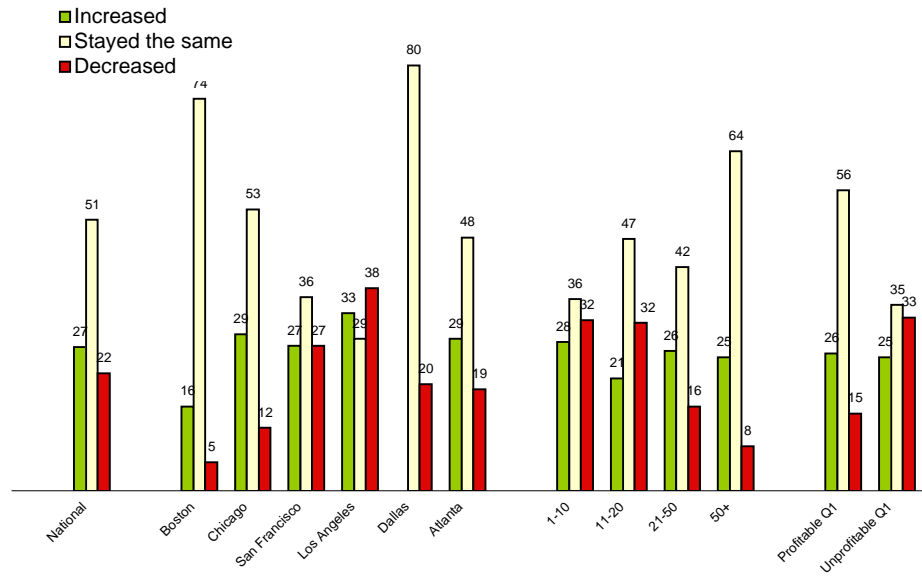
PRINTSTAFF SURVEY 2003 Q2

RESPONSE SUMMARY
RESPONDENT PROFILE
PROFITABILITY
OUTLOOK

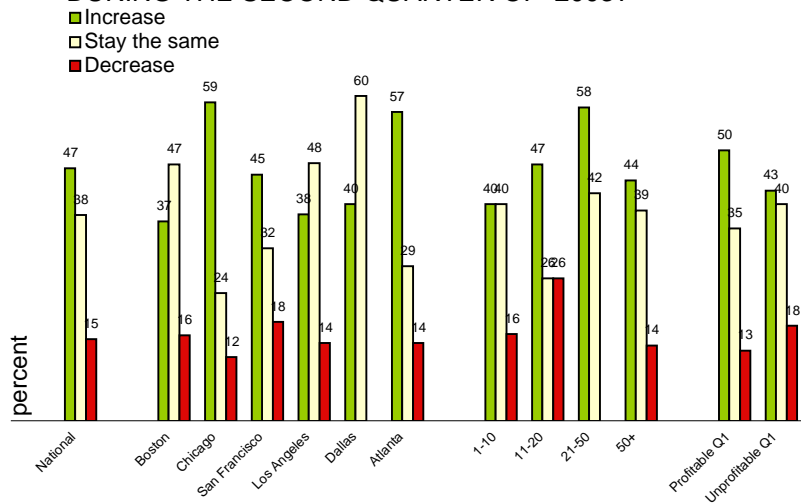
DID YOUR COMPANY HAVE A PROFITABLE FIRST QUARTER 2003?



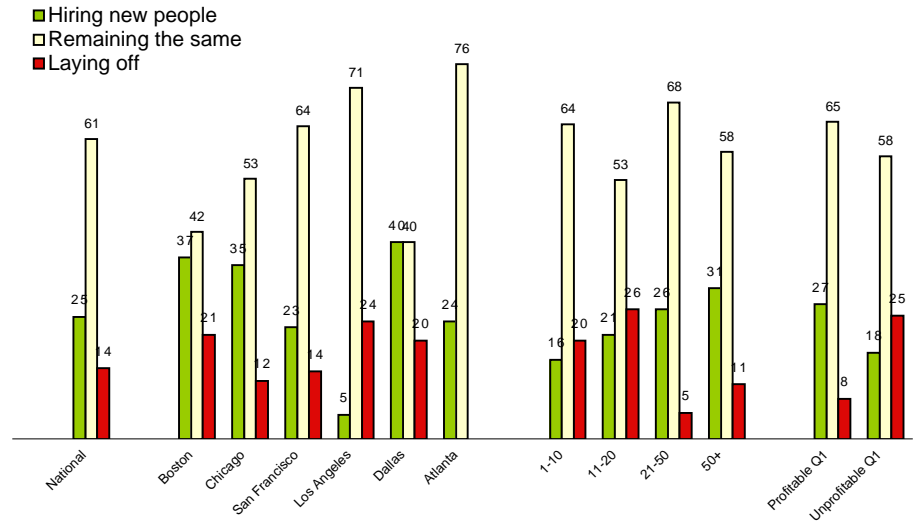
HAS BUSINESS _____ IN THE LAST TWO WEEKS?

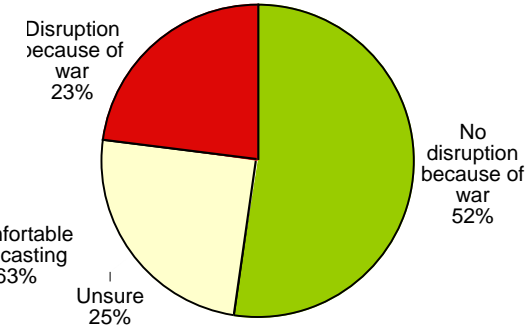
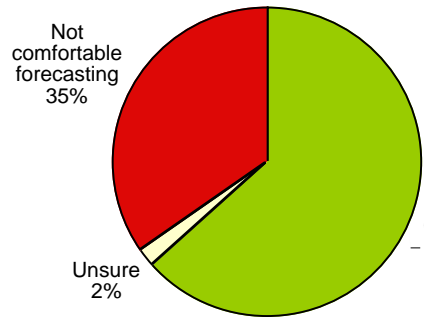
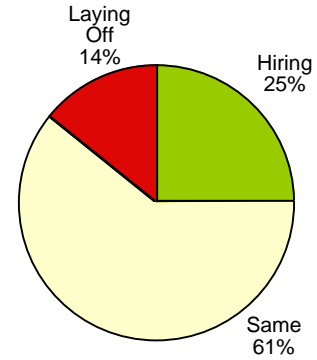
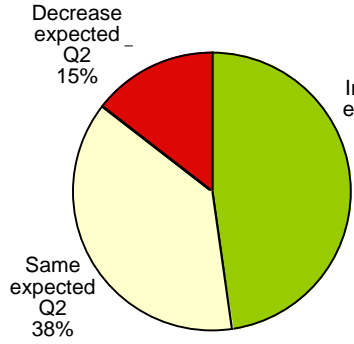
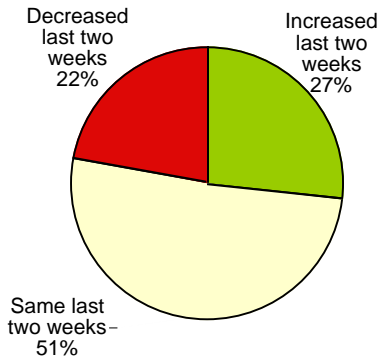
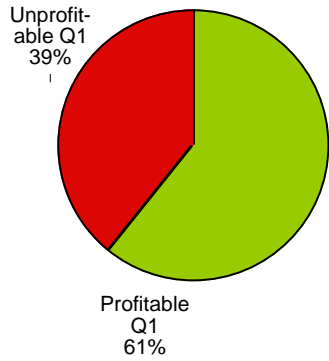
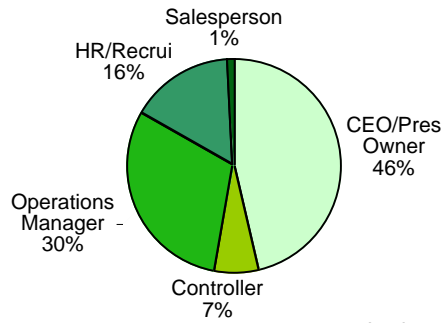
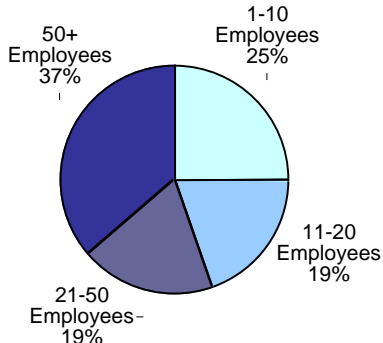
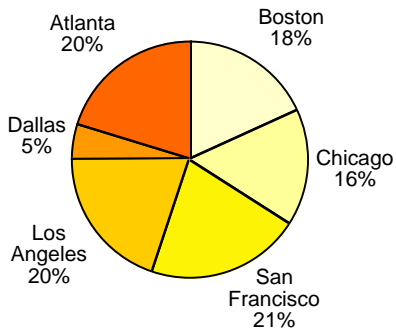


DO YOU EXPECT YOUR SALES TO _____ DURING THE SECOND QUARTER OF 2003?



IS YOUR COMPANY _____ ?





HOW DOES THIS COMPARE WITH LAST QTR?

	Q1	Q2	Change
--	----	----	--------

PREVIOUS QTR/ YEAR:

Profitable	71%	61%	-10
Unprofitable	29%	39%	+10

BUSINESS TWO WEEKS BEFORE SURVEY:

Increased	54%	27%	-27
Same	29%	51%	+22
Decreased	17%	22%	+5

SALES EXPECTATION NEXT QTR:

Increase	87%	47%	-40
Same		38%	+38
Decrease	13%	15%	+2

CURRENTLY:

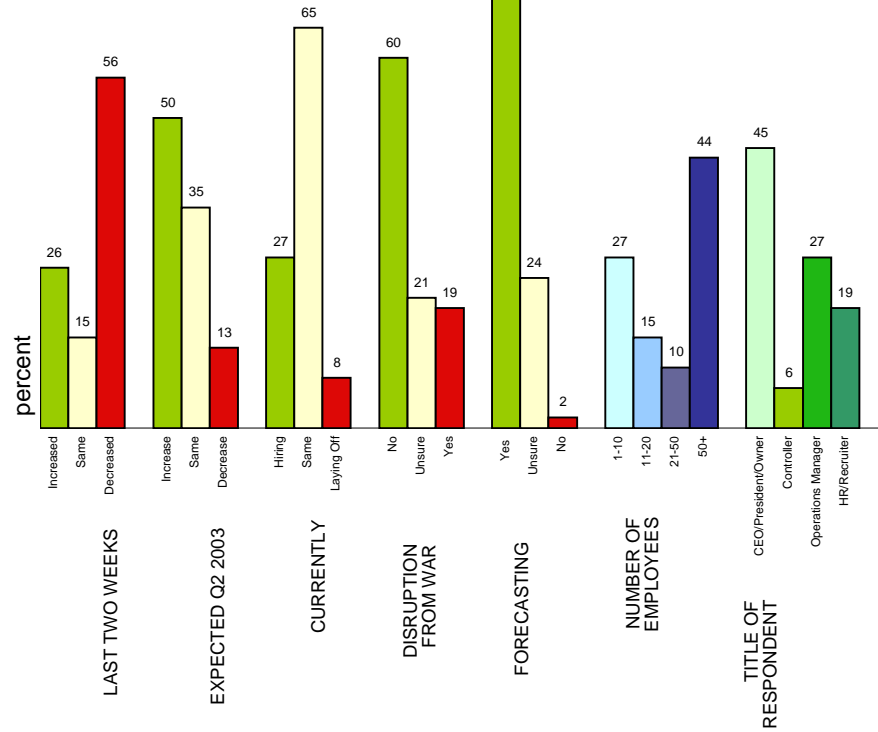
Hiring	29%	25%	-4
Same	62%	61%	-1
Laying Off	9%	14%	+5

Q2

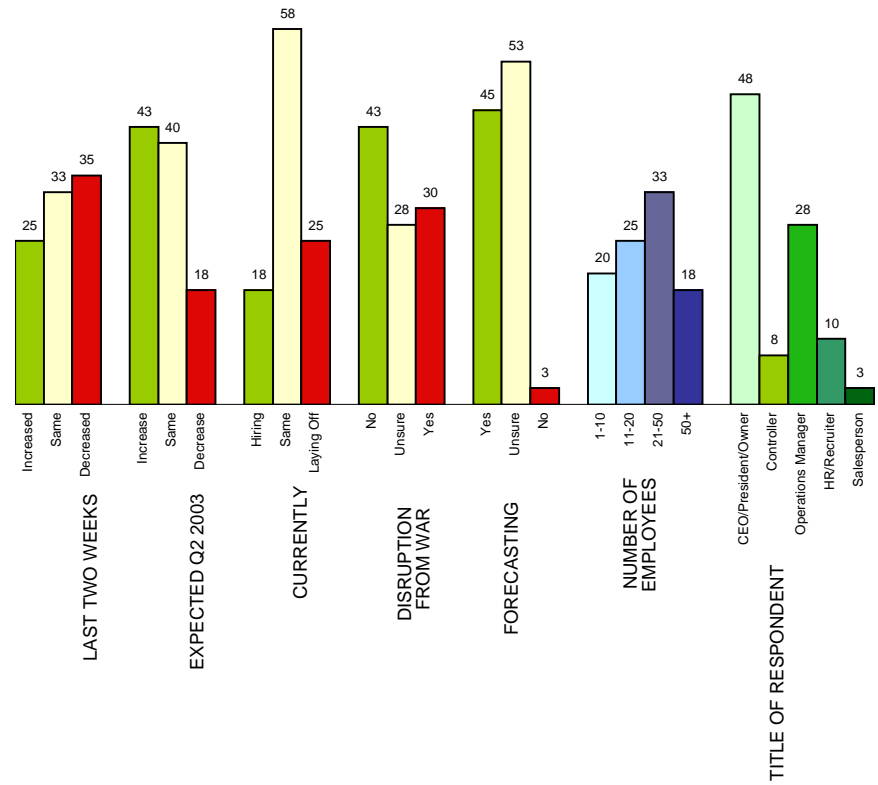
PRINTSTAFF SURVEY 2003 Q2

RESPONDENT PROFILE

PROFITABLE Q1 2003
61% of all respondents



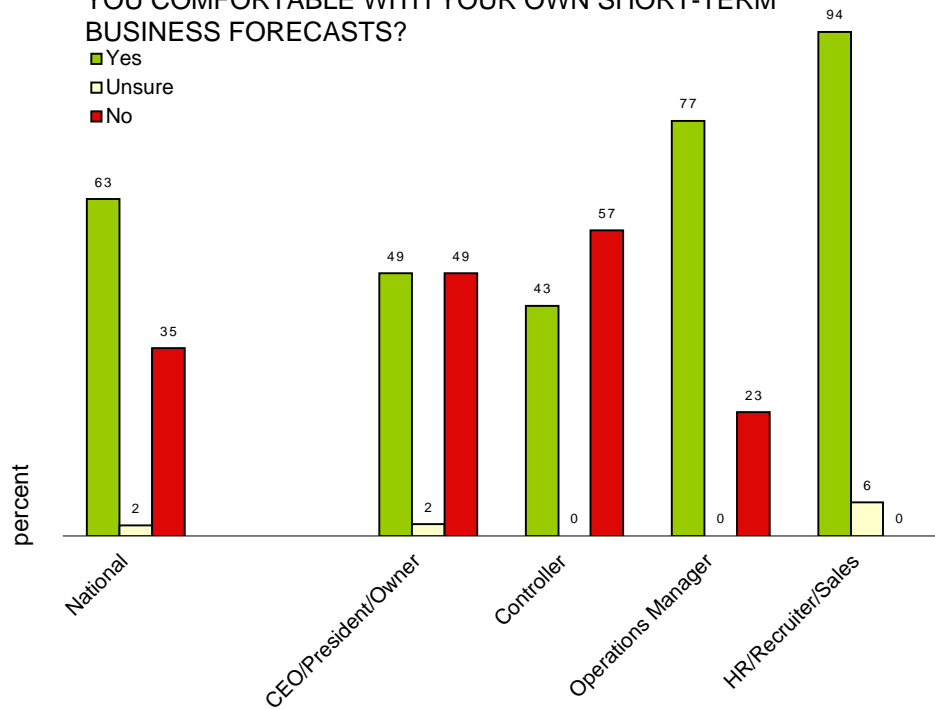
UNPROFITABLE Q1 2003
31% of all respondents



Q2

CONSIDERING THE HIGHLY VARIABLE ECONOMY, ARE YOU COMFORTABLE WITH YOUR OWN SHORT-TERM BUSINESS FORECASTS?

■ Yes
 □ Unsure
 ■ No



HAVE YOU SEEN ANY DISRUPTION IN BUSINESS BECAUSE OF THE WAR? PLEASE NOTE: MOST RESPONSES RECEIVED ON APRIL 1 or 2, 2003.

■ No
 □ Unsure
 ■ Yes

