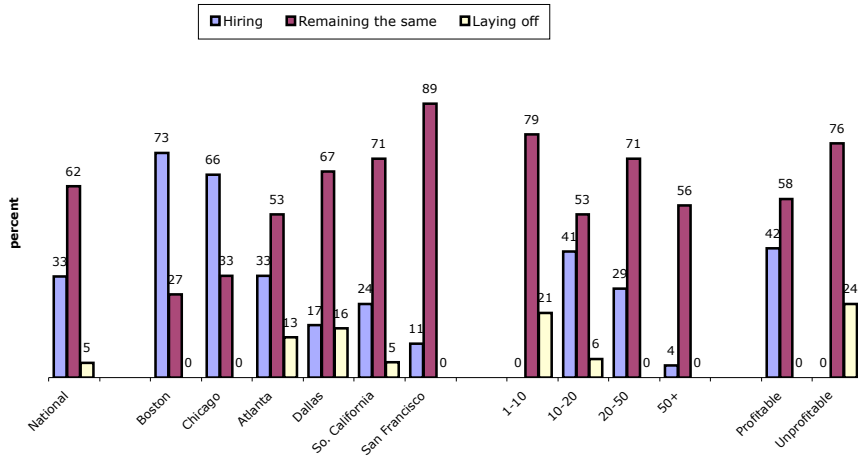


# **PRINTSTAFF SURVEY 2004 Q2**

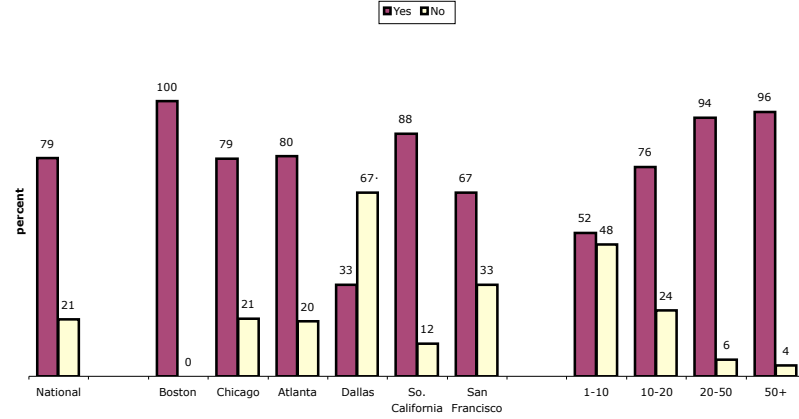
RESPONSE SUMMARY  
PROFITABILITY  
OUTLOOK  
CONCERNS  
RESPONDENT PROFILE

# PRINTSTAFF SURVEY 2004 Q2 RESPONSE SUMMARY

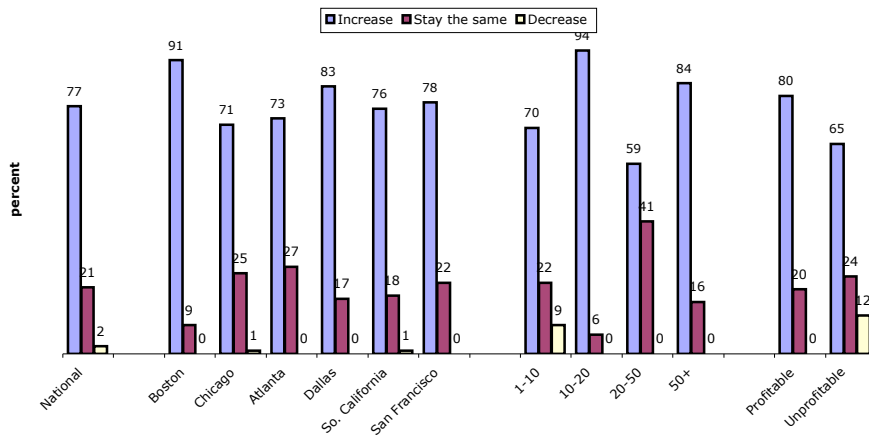
Is your company \_\_\_\_?



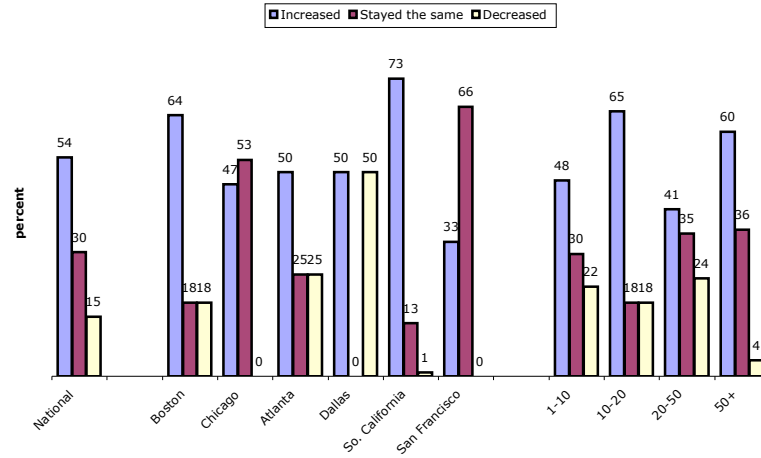
Did your company have a profitable 1st quarter 2004?



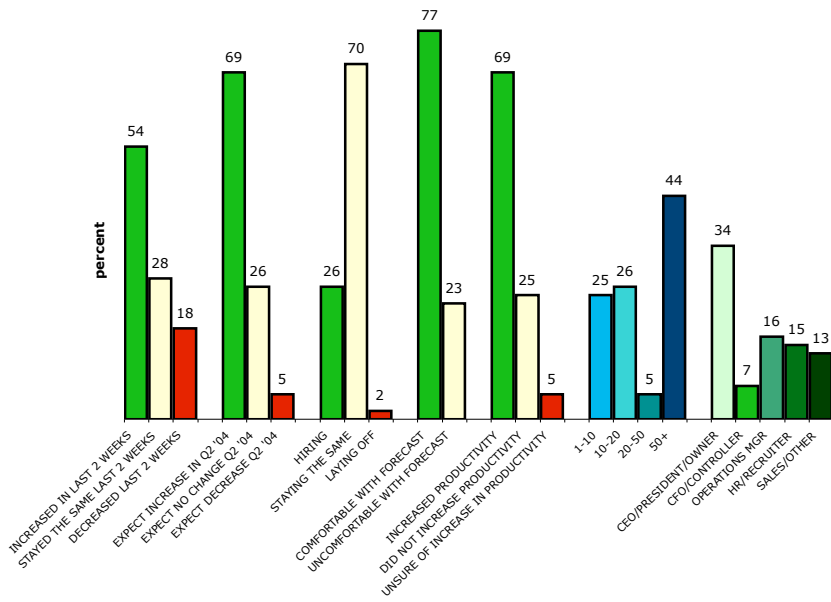
Do you expect your sales to \_\_\_\_ during the second quarter of 2004?



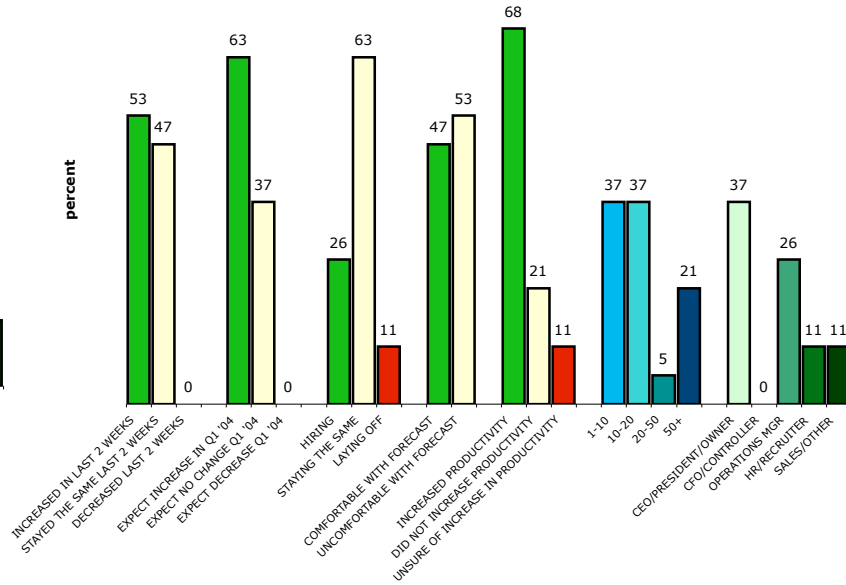
Has business \_\_\_\_ in the last 2 weeks?



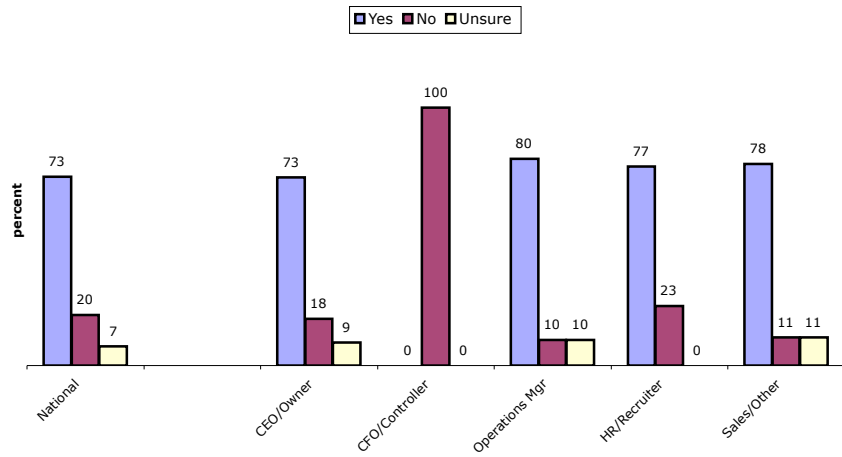
**Profitable Q1 2004**  
79% of respondents



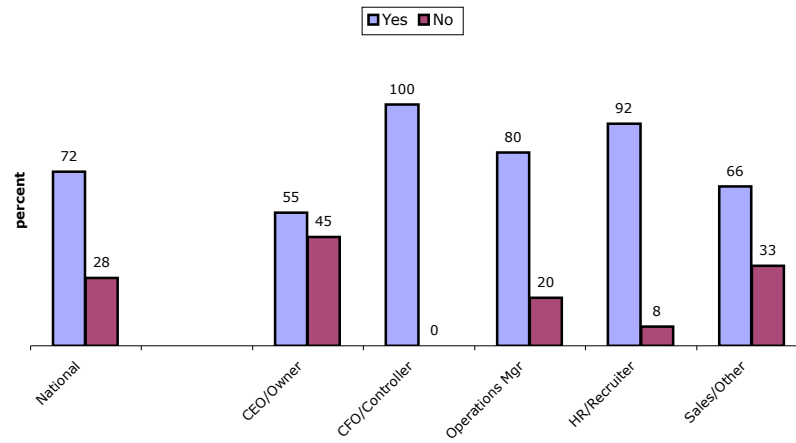
**Unprofitable Q1 2004**  
21% of respondents



**Has your company been able to increase productivity without hiring new employees?**

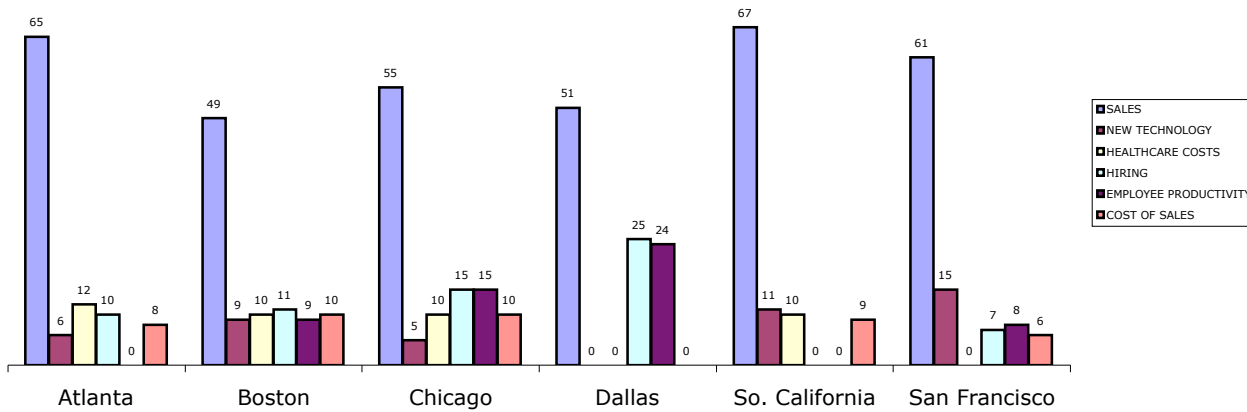
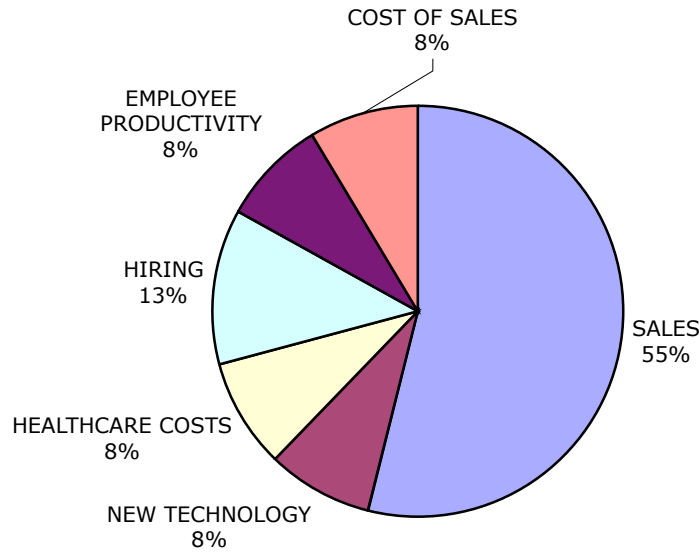


**Considering the highly variable economy, are you comfortable with your own short term business forecasts?**

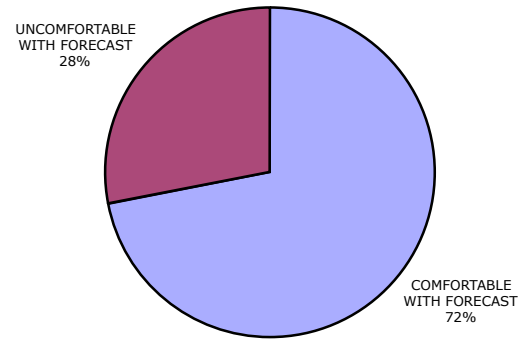
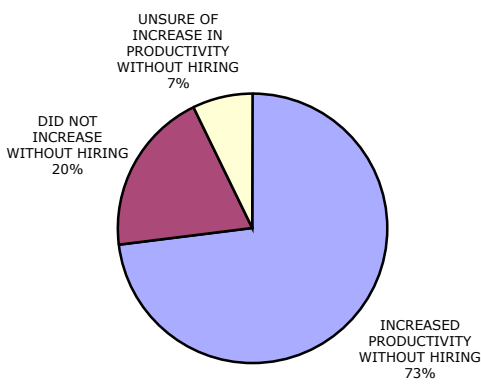
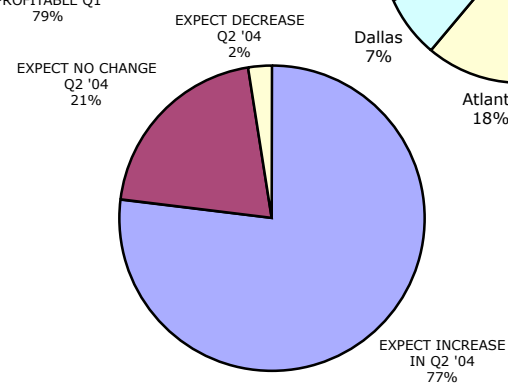
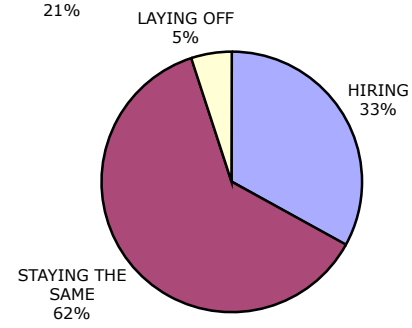
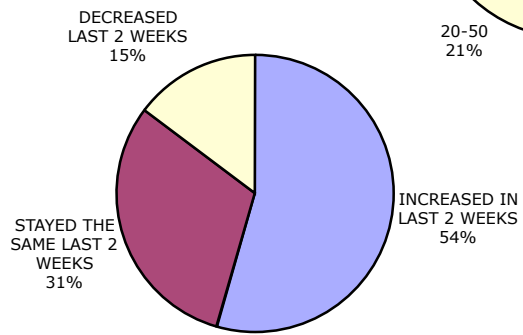
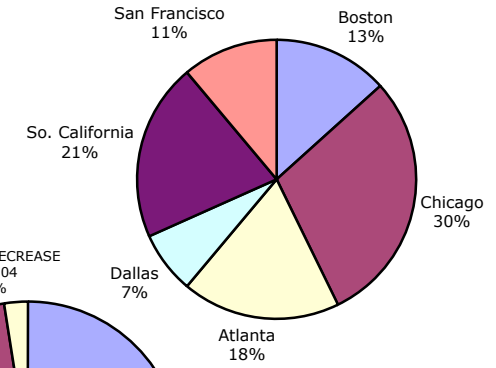
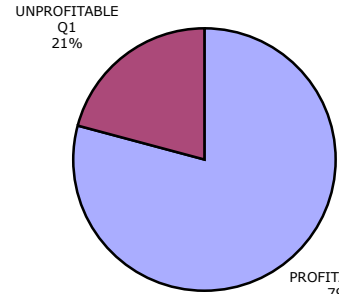
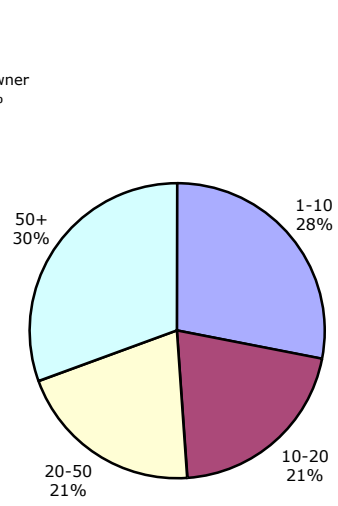
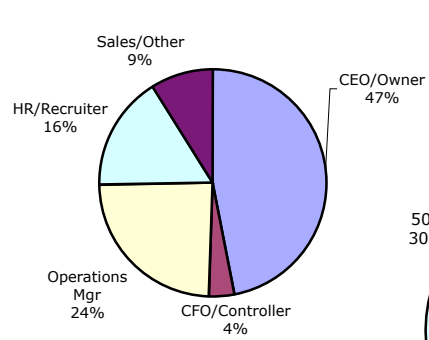


# PRINTSTAFF SURVEY 2004 Q2 **CONCERNS**

**What is the biggest concern facing your business?**



# PrintStaff Survey 2004 Q2 RESPONDENT PROFILE



## HOW DOES THIS COMPARE WITH LAST QUARTER?

	Q4 percentage	Q1 percentage	CHANGE
<b>PREVIOUS QTR</b>			
Profitable	76	79	3
Unprofitable	24	21	-3
<b>BUSINESS 2 WEEKS BEFORE SURVEY</b>			
increased	32	54	22
same	53	31	-22
Decreased	15	15	0
<b>SALES EXPECTATIONS NEXT QTR</b>			
Increase	66	77	11
Same	30	21	-9
Decrease	4	2	-2
<b>CURRENTLY</b>			
Hiring	28	33	5
Same	68	62	-6
Laying off	4	5	1