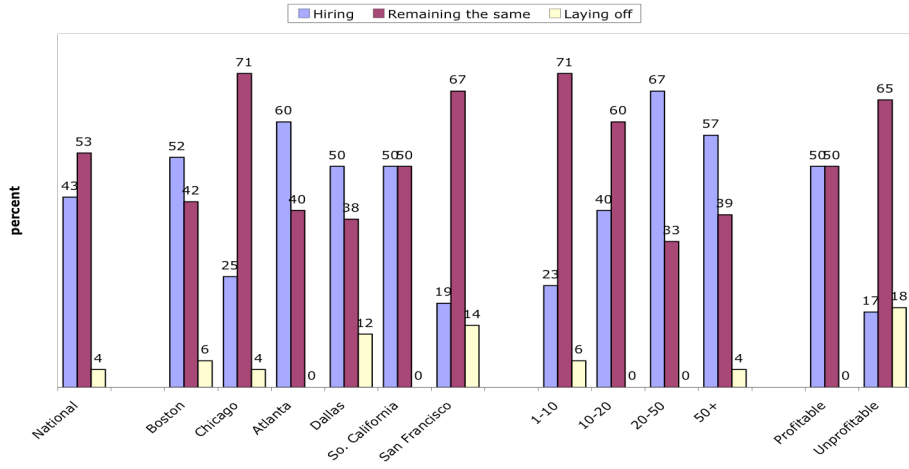


PRINTSTAFF SURVEY 2004 Q4

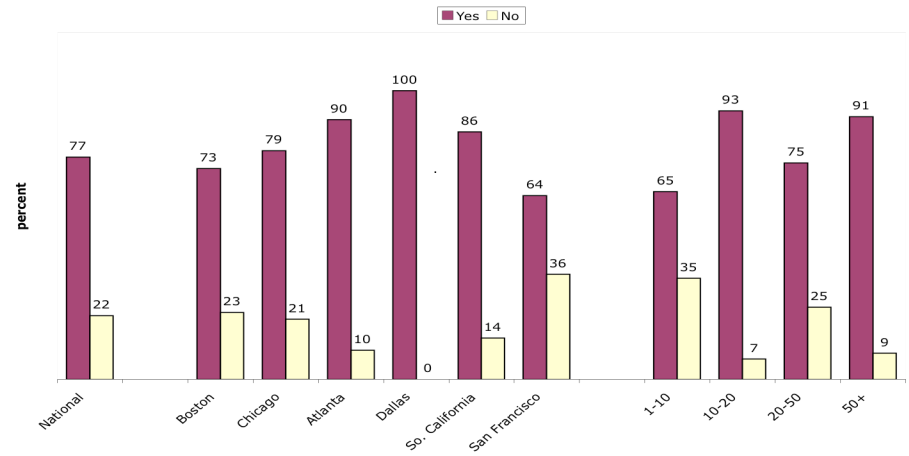
RESPONSE SUMMARY
PROFITABILITY
OUTLOOK
CONCERNS
RESPONDENT PROFILE

PRINTSTAFF SURVEY 2004 Q4 RESPONSE SUMMARY

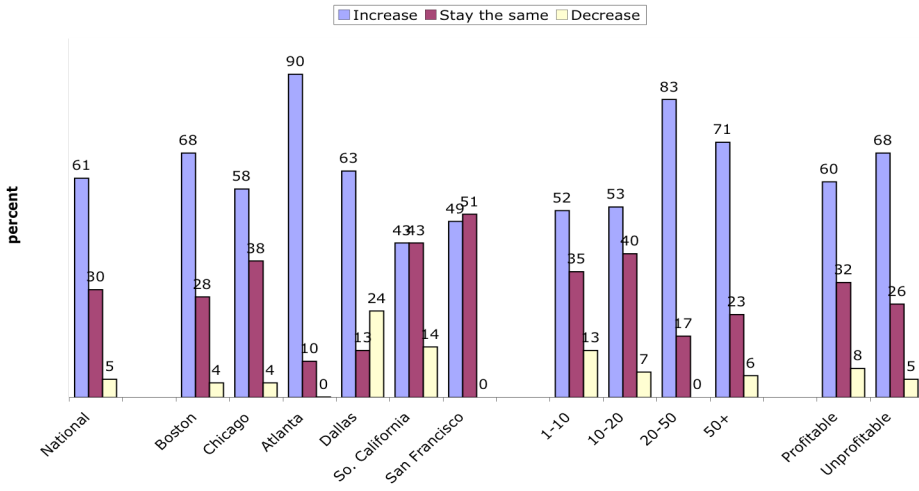
Is your company_____?



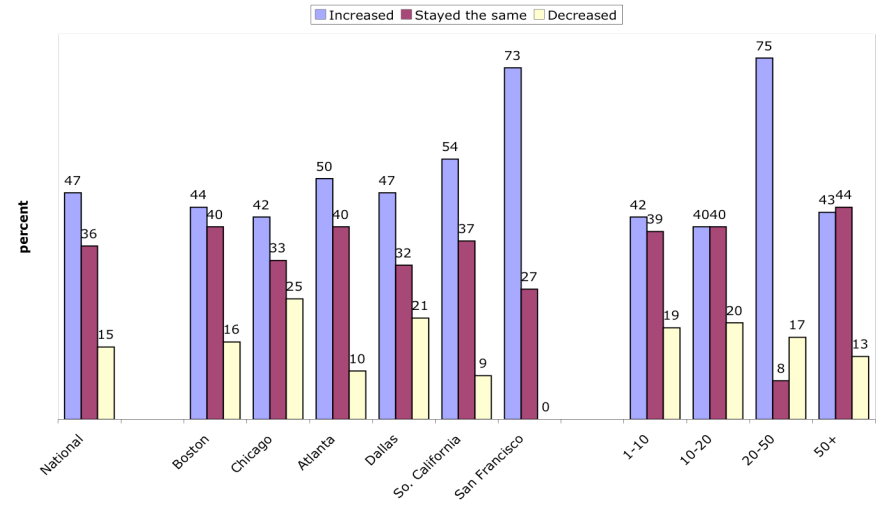
Did your company have a profitable 3rd quarter 2004?



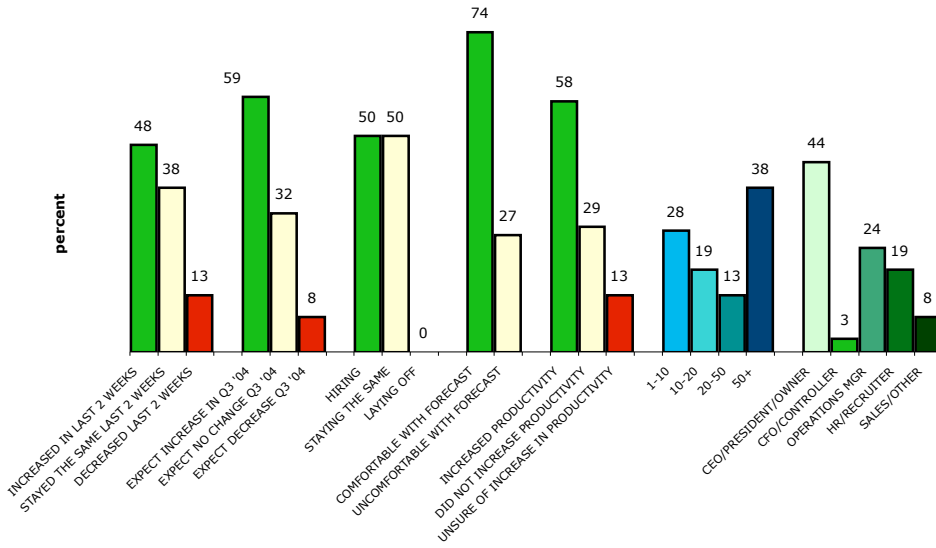
Do you expect your sales to _____ during the fourth quarter of 2004?



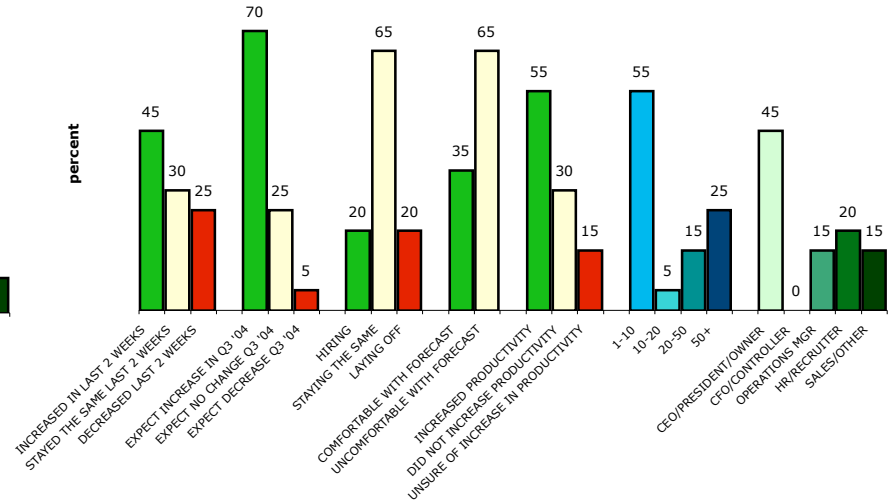
Has business _____ in the last 2 weeks?



Profitable Q3 2004
78% of respondents

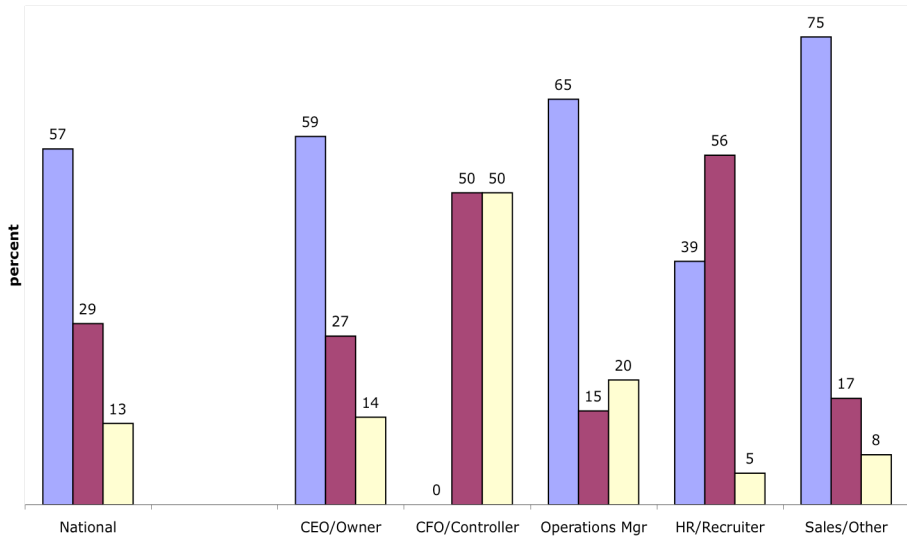


Unprofitable Q3 2004
22% of respondents



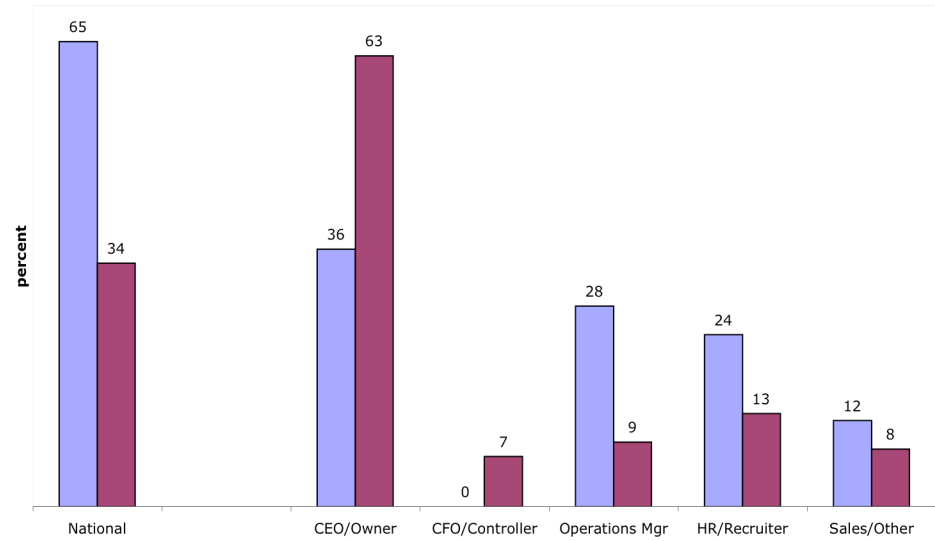
Has your company been able to increase productivity without hiring new employees?

Yes No Unsure

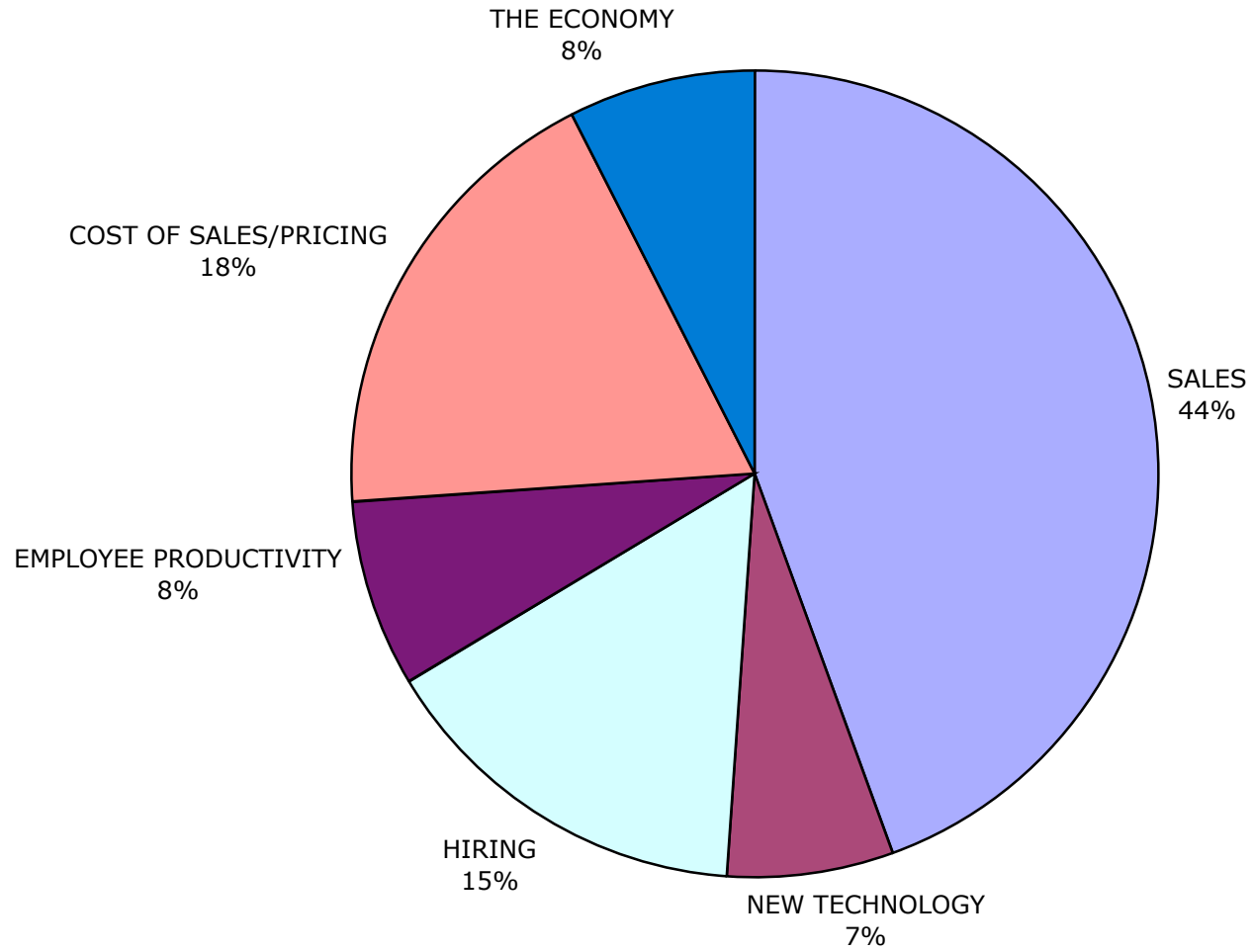


Considering the highly variable economy, are you comfortable with your own short term business forecasts?

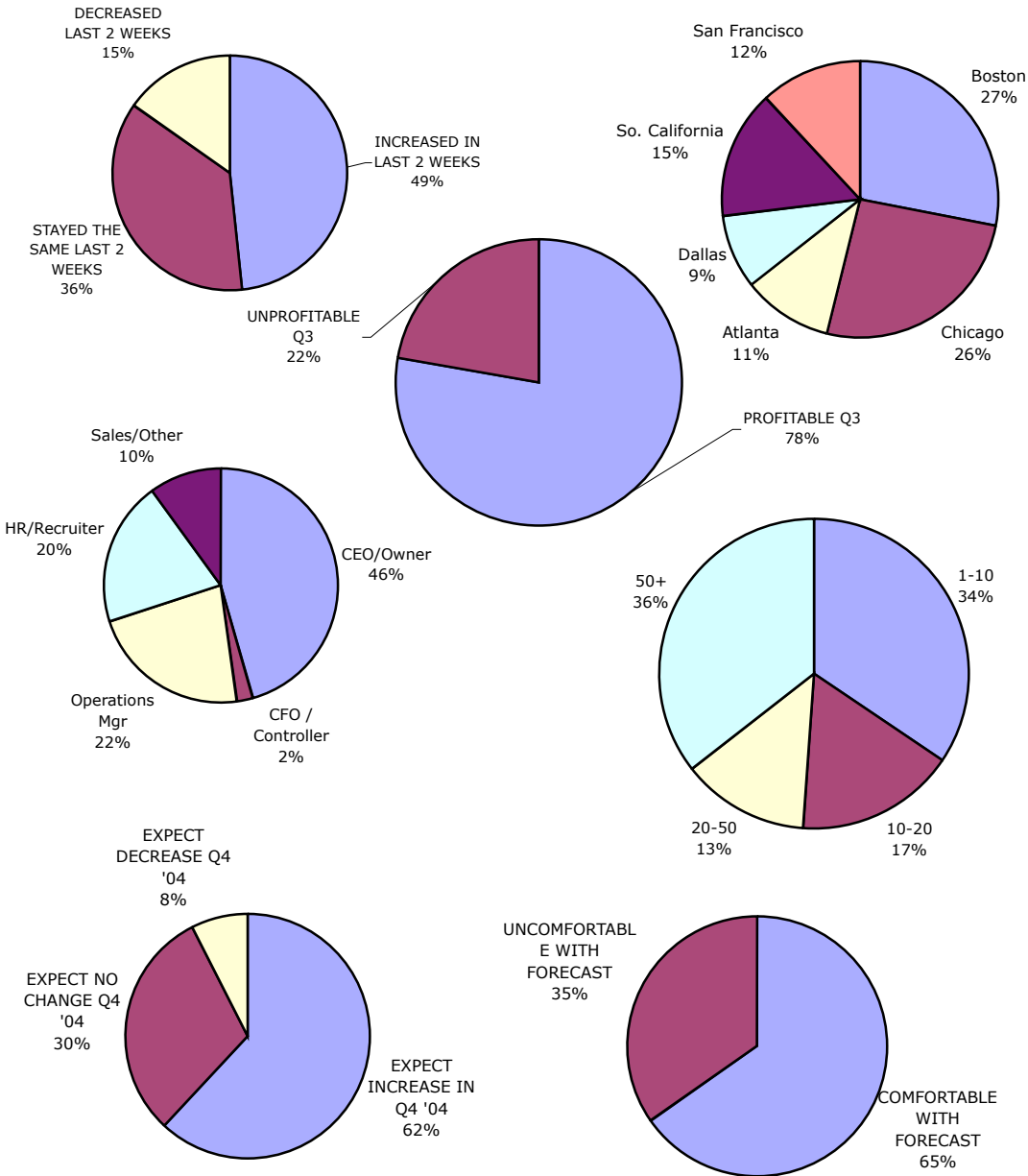
Yes No



What is the biggest concern facing your business?



PrintStaff Survey 2004 Q4 **RESPONDENT PROFILE**



2004 TRENDS

	Q2 percentage	Q3 percentage	CHANGE
PREVIOUS QTR			
Profitable	75	78	3
Unprofitable	24	22	-2
BUSINESS 2 WEEKS BEFORE SURVEY			
increased	36	49	13
same	36	36	0
Decreased	27	15	-12
SALES EXPECTATIONS NEXT QTR			
Increase	63	62	-1
Same	30	30	0
Decrease	6	8	2
CURRENTLY			
Hiring	25	43	18
Same	60	53	-7
Laying off	13	4	-9