

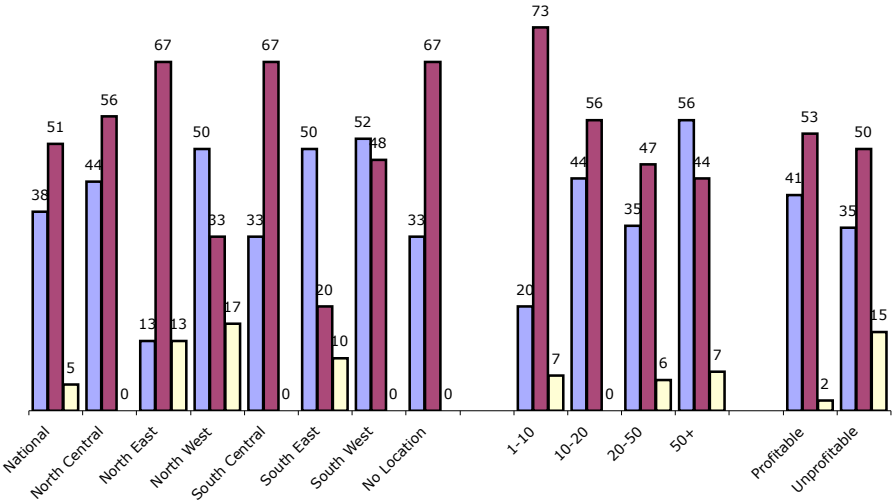
# **PRINTSTAFF SURVEY 2005 Q2**

RESPONSE SUMMARY  
PROFITABILITY  
RESPONDENT PROFILE

# PRINTSTAFF SURVEY 2005 Q2 RESPONSE SUMMARY

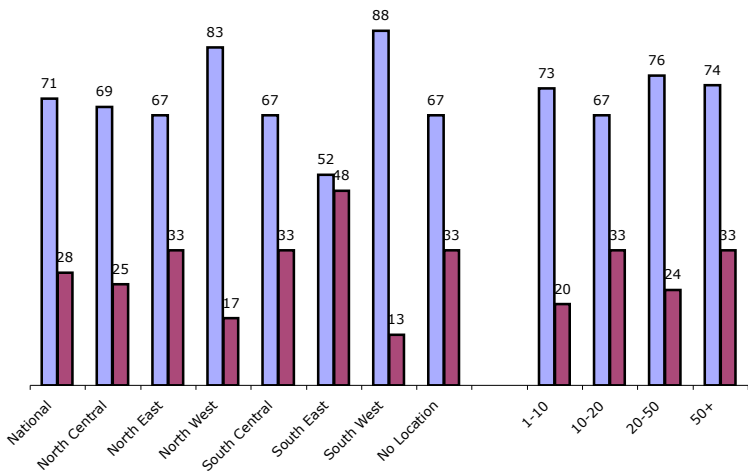
Is your company \_\_\_\_?

■ Hiring ■ Staying the same ■ Laying off



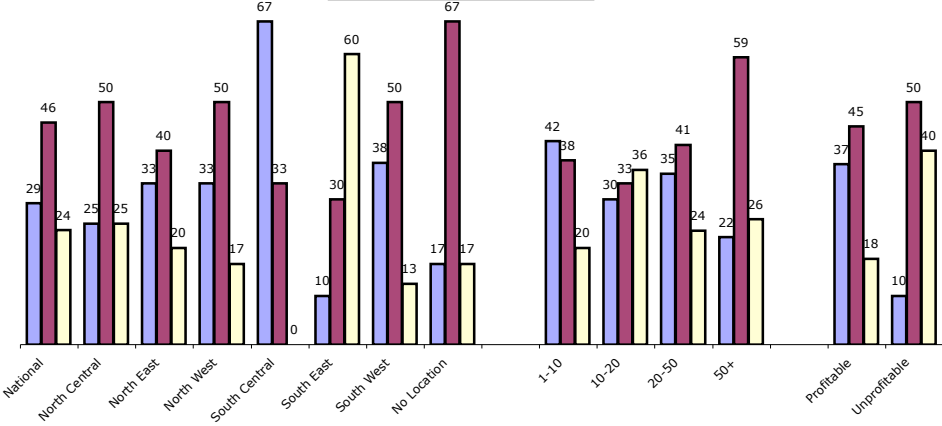
Did your company have a profitable 1st quarter 2005?

■ yes ■ no



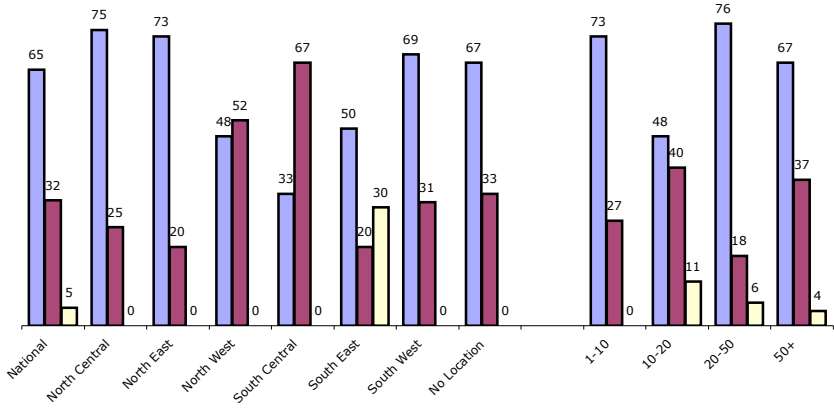
Do you expect your sales to \_\_\_\_ during the second quarter of 2005?

■ Increase ■ Decrease ■ Stay the same



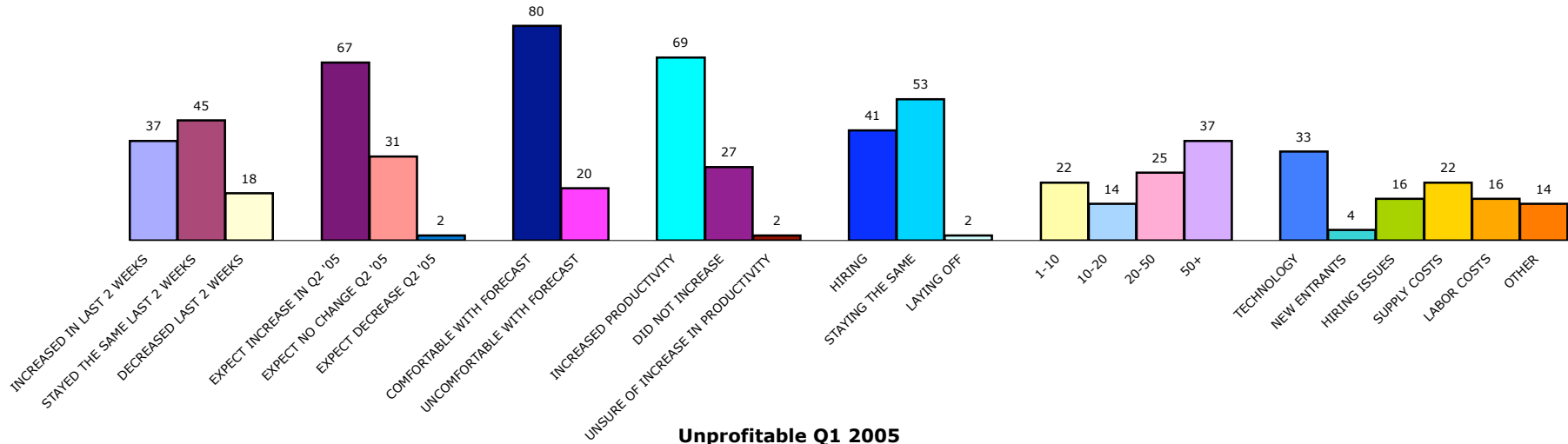
Has business \_\_\_\_ in the last 2 weeks?

■ Increase ■ Decrease ■ Stay the same

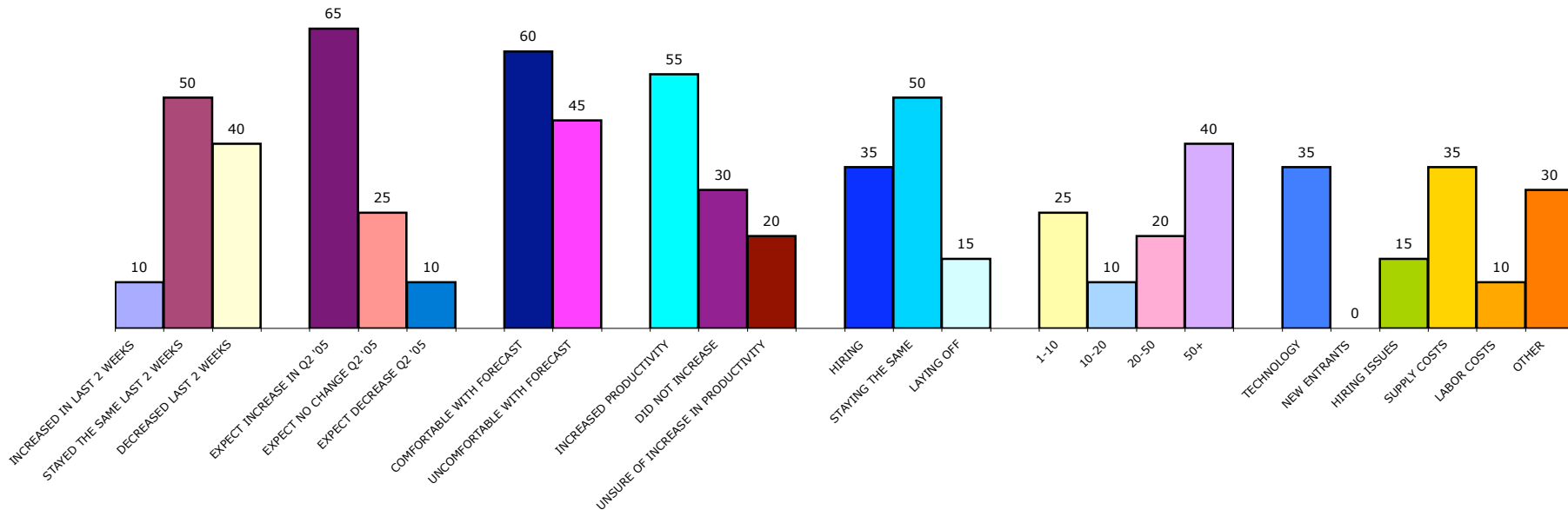


# PRINTSTAFF SURVEY 2005 Q2 **PROFITABILITY**

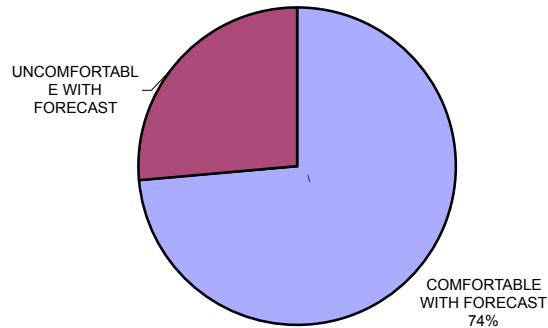
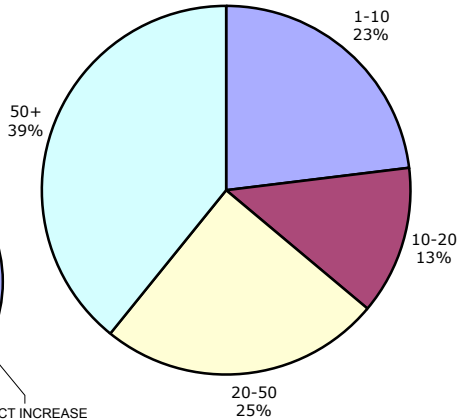
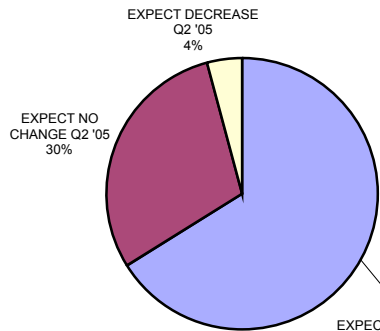
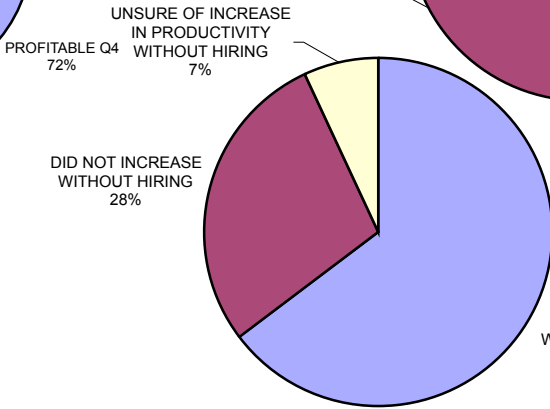
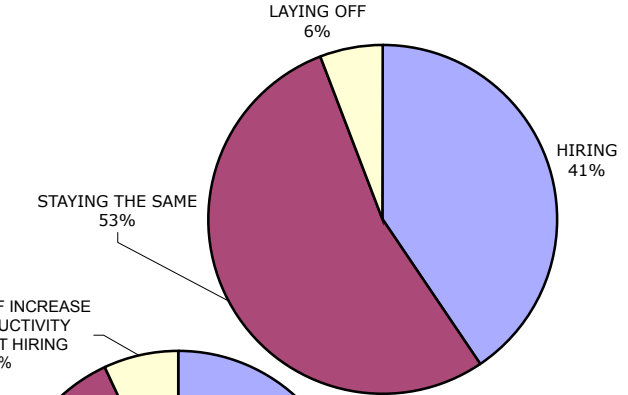
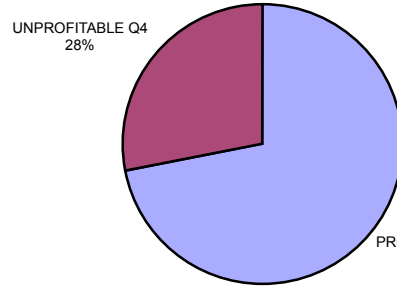
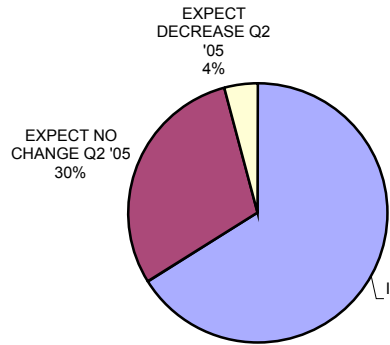
**Profitable Q1 2005**  
72% of respondents



**Unprofitable Q1 2005**  
28% of respondents



# PRINTSTAFF SURVEY 2005 Q2 RESPONDENT PROFILE



## TRENDS

	Q3 2004 %	Q4 2004 %	Q1 2005 %	CHANGE
<b>PREVIOUS QTR</b>				
Profitable	78	76	78	2
Unprofitable	22	24	22	-2
<b>BUSINESS 2 WEEKS BEFORE SURVEY</b>				
Increased	49	50	30	-20
Same	36	26	46	20
Decreased	15	18	24	6
<b>SALES EXPECTATIONS NEXT QTR</b>				
Increase	62	58	66	8
Same	30	34	30	-4
Decrease	8	3	4	1
<b>CURRENTLY</b>				
Hiring	43	52	41	-11
Same	53	42	53	11
Laying off	4	6	6	0