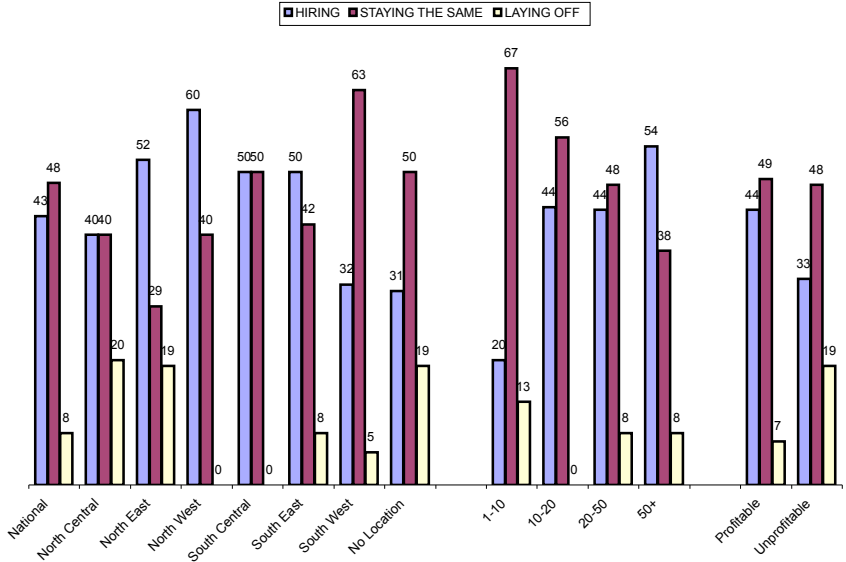


PRINTSTAFF SURVEY 2005 Q3

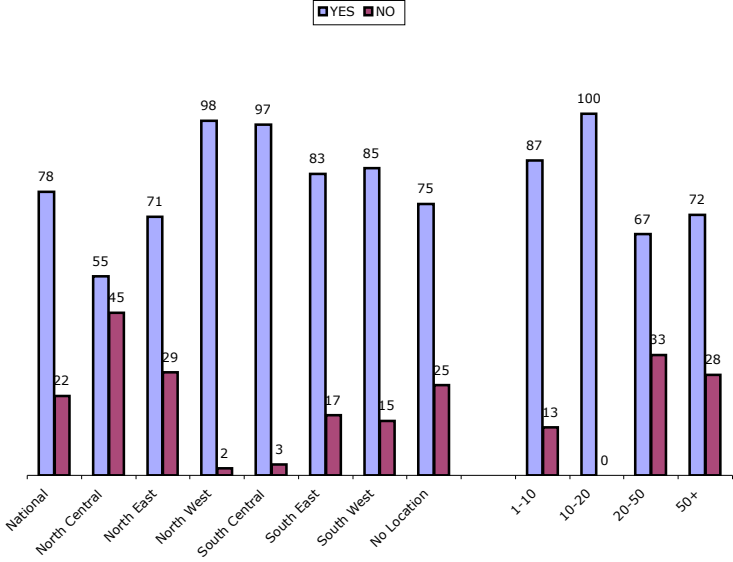
RESPONSE SUMMARY
PROFITABILITY
RESPONDENT PROFILE

PRINTSTAFF SURVEY 2005 Q3 RESPONSE SUMMARY

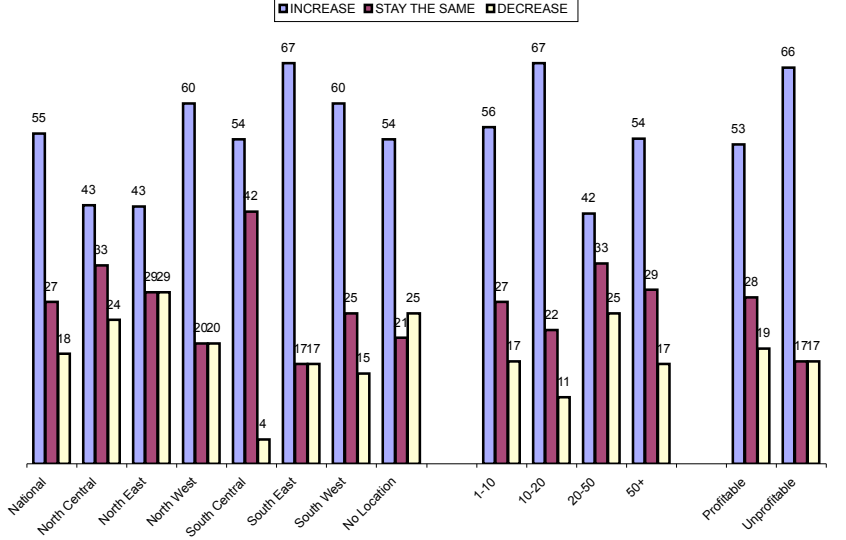
Is your company ____?



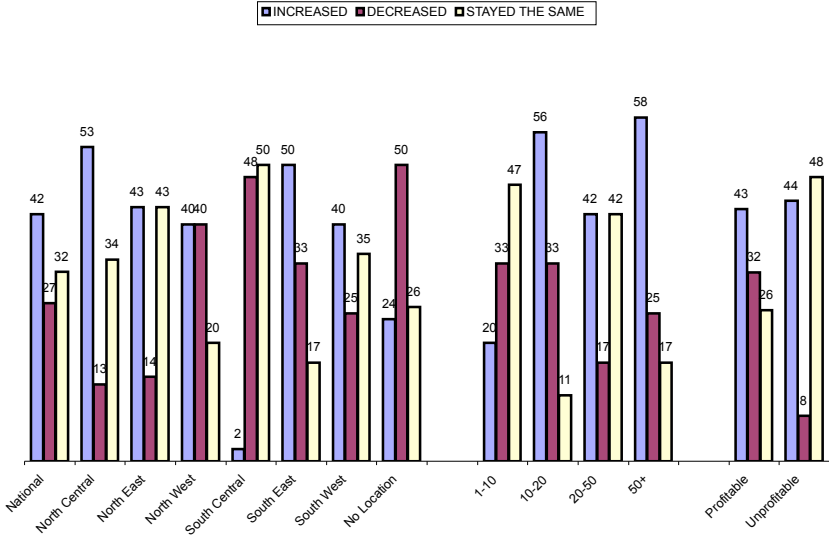
Did your company have a profitable 2nd quarter 2005?



Do you expect your sales to _____ during the third quarter of 2005?

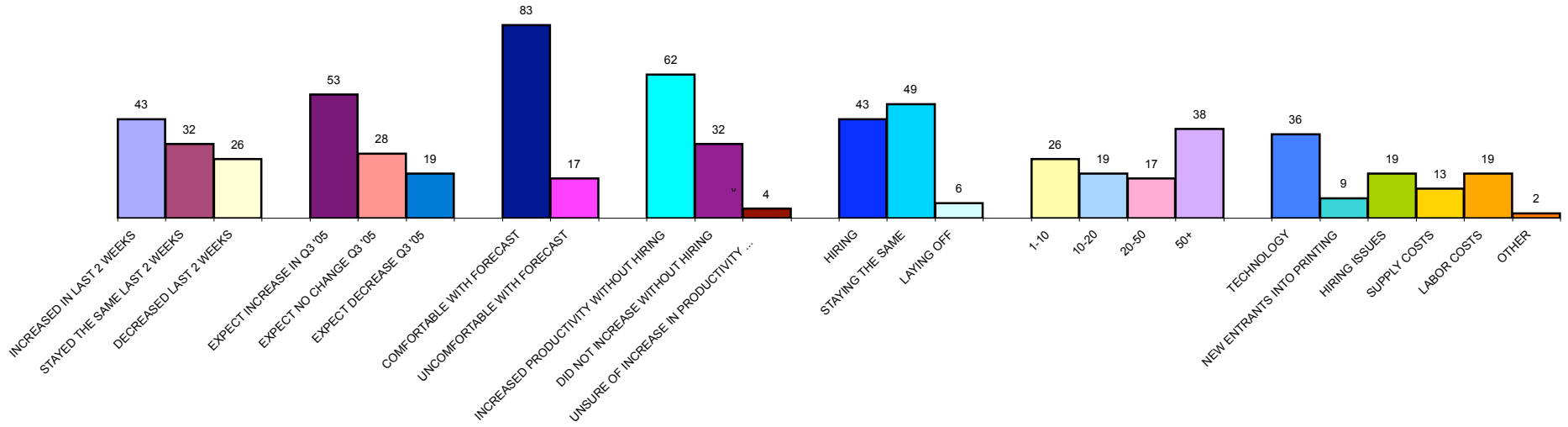


Has business _____ in the last two weeks?

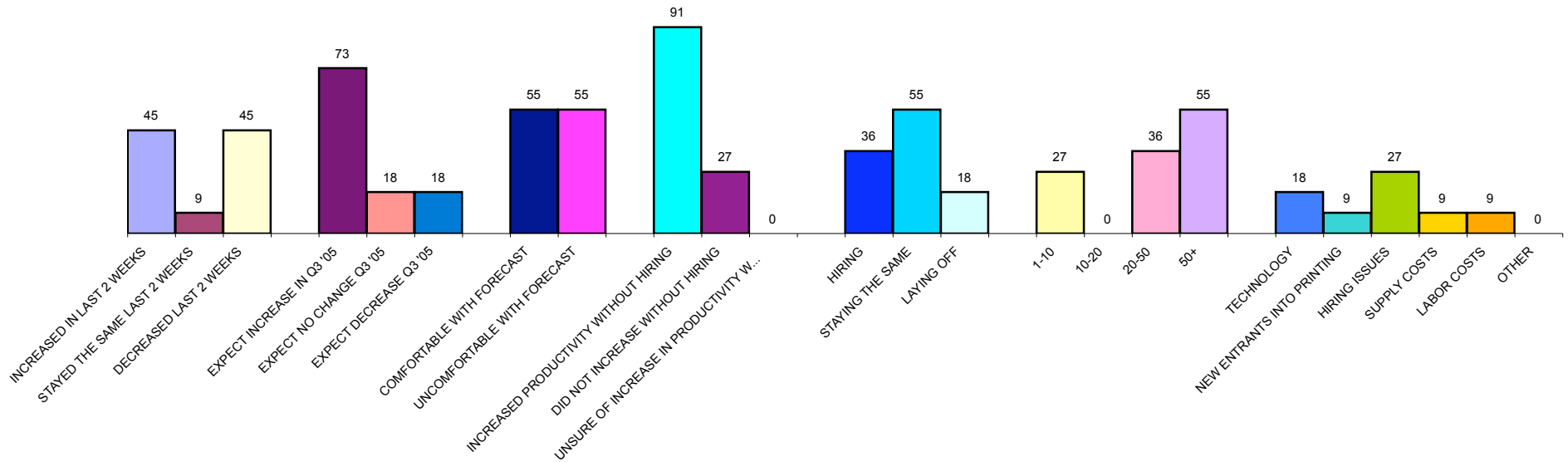


PRINTSTAFF SURVEY 2005 Q3 **PROFITABILITY**

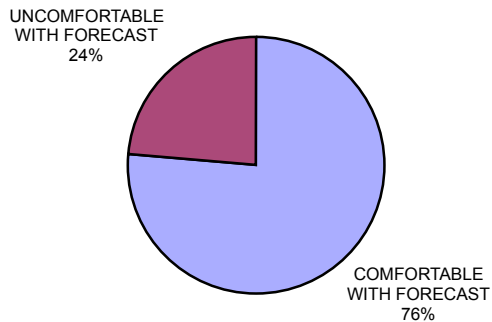
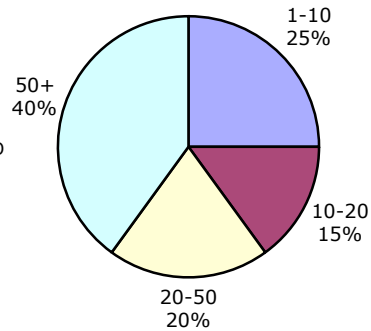
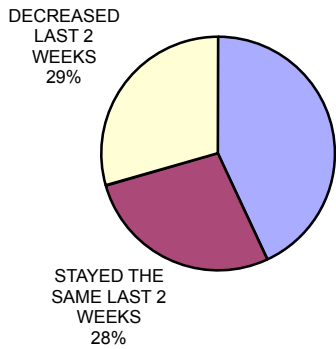
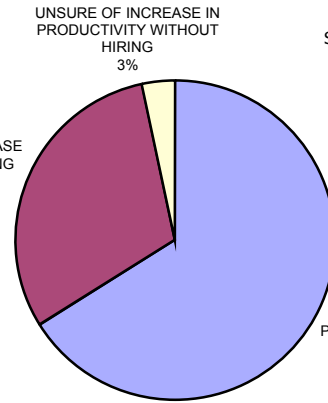
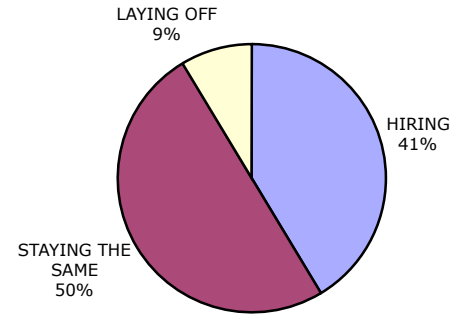
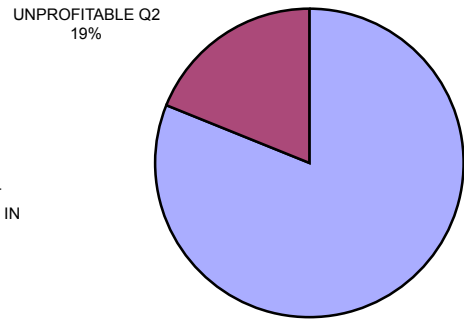
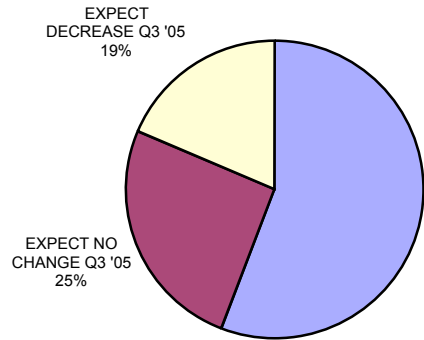
Profitable Q2 2005
81%



Unprofitable Q2 2005
19%



PRINTSTAFF SURVEY 2005 Q3 RESPONDENT PROFILE



2004 - 2005 TRENDS

	Q4 percentage	Q1 percentage	Q2 percentage	CHANGE
PREVIOUS QTR				
Profitable	76	78	81	3
Unprofitable	24	22	19	-3
BUSINESS 2 WEEKS BEFORE SURVEY				
Increased	50	30	43	13
Same	26	46	28	-18
Decreased	18	24	29	5
SALES EXPECTATIONS NEXT QTR				
Increase	58	66	56	-10
Same	34	30	25	-5
Decrease	3	4	19	15
CURRENTLY				
Hiring	52	41	41	0
Same	42	53	50	-3
Laying off	6	6	9	3