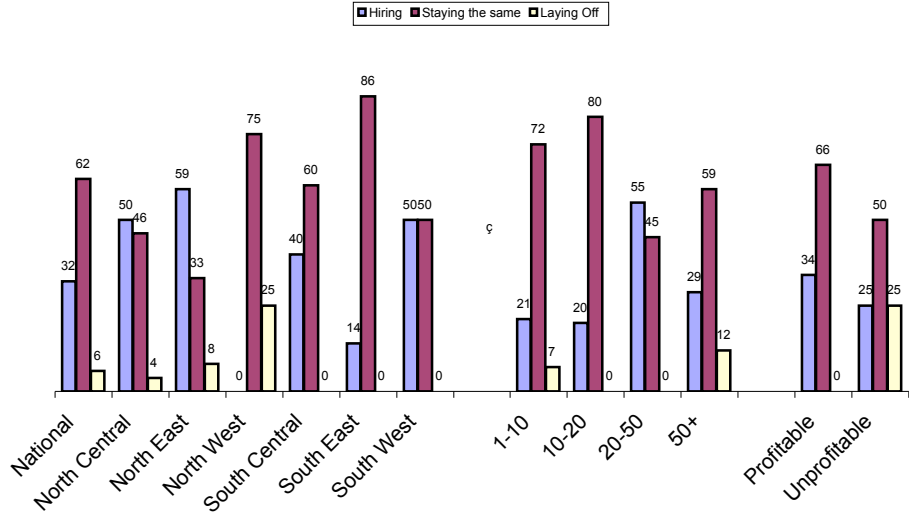


SEMPER SURVEY 2006 Q3

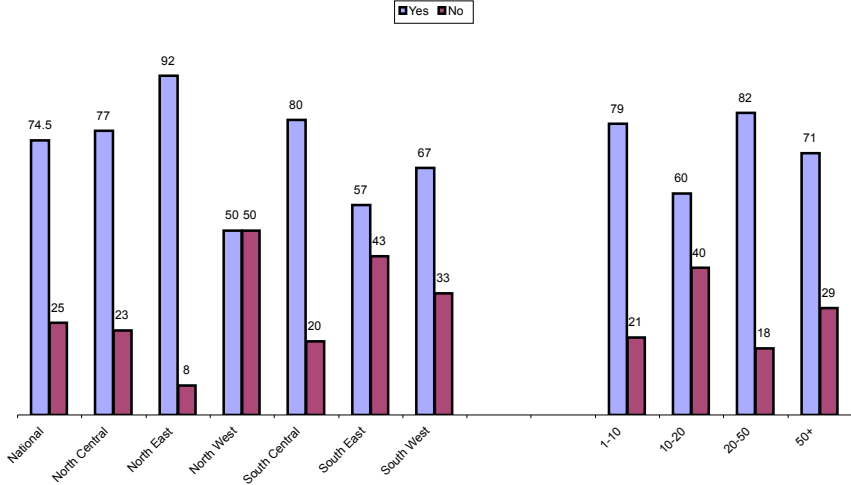
RESPONSE SUMMARY
PROFITABILITY
RESPONDENT PROFILE
CONCERNS

SEMPER SURVEY 2006 Q3 RESPONSE SUMMARY

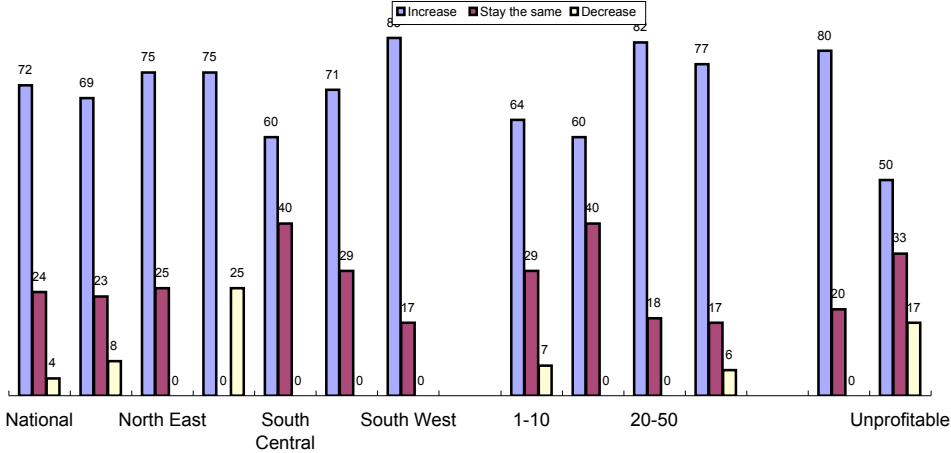
Is Your Company ____ ?



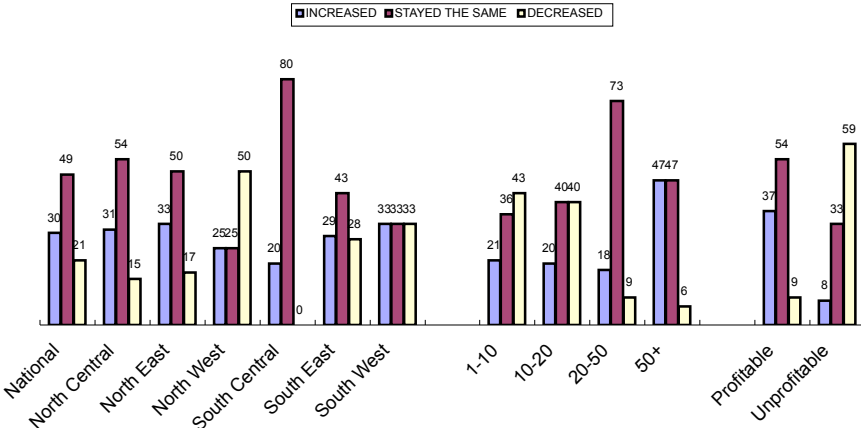
Did your company have a profitable 2nd quarter 2006?



Do you expect your sales to ____ during the third quarter of 2006?

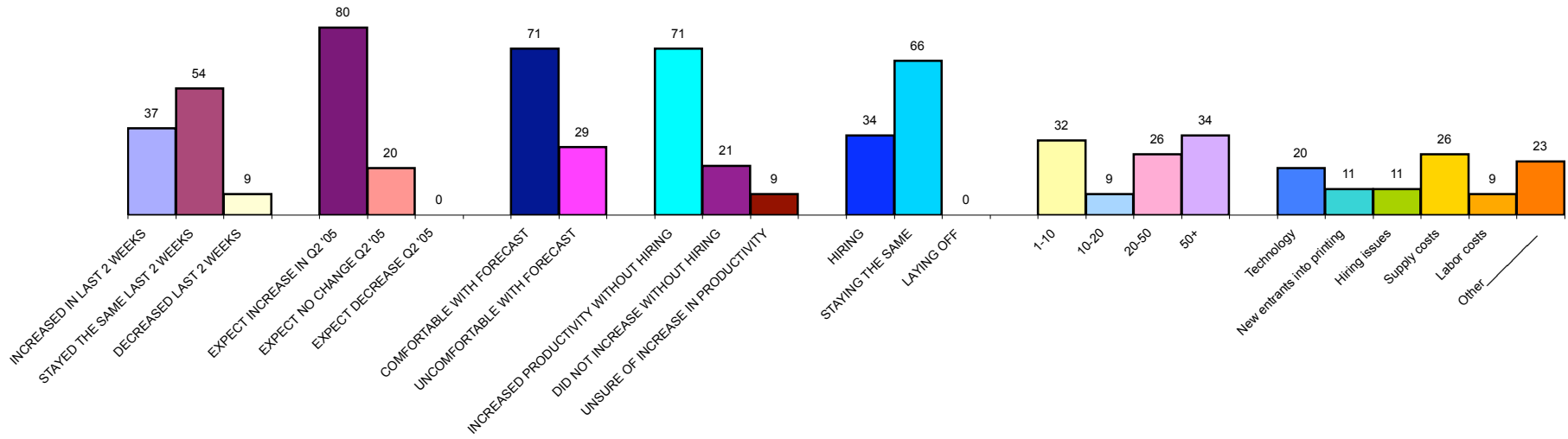


Has business ____ in the last 2 weeks?

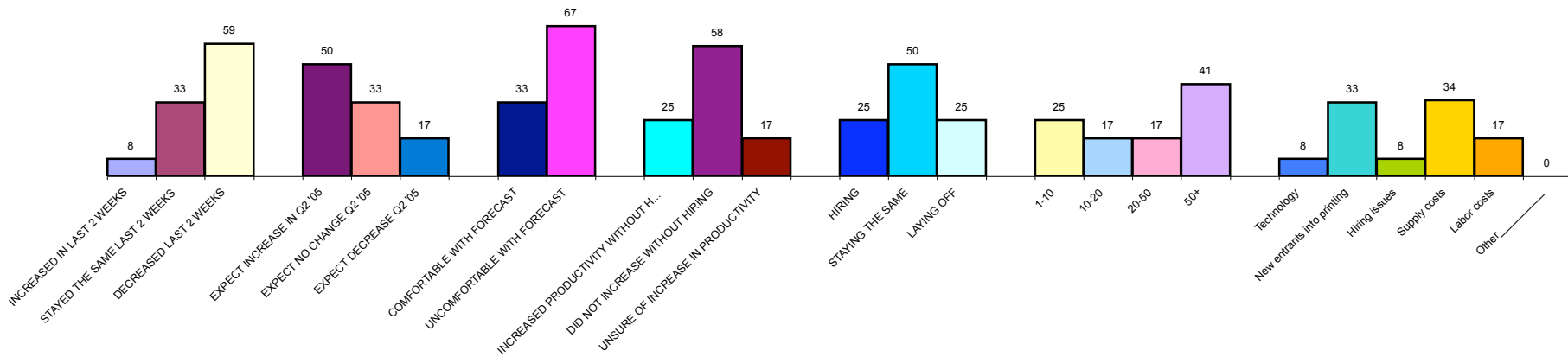


SEMPER SURVEY 2006 Q3 **PROFITABILITY**

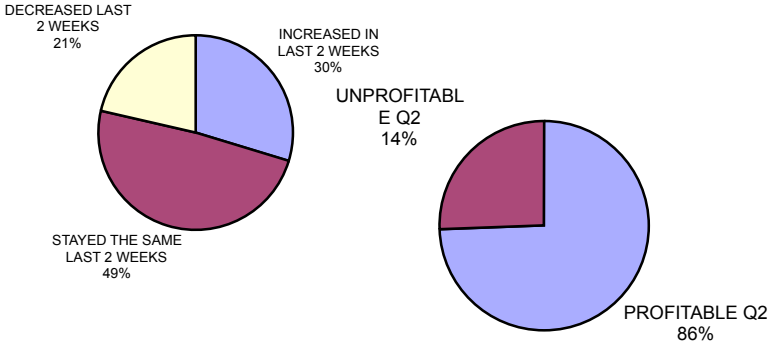
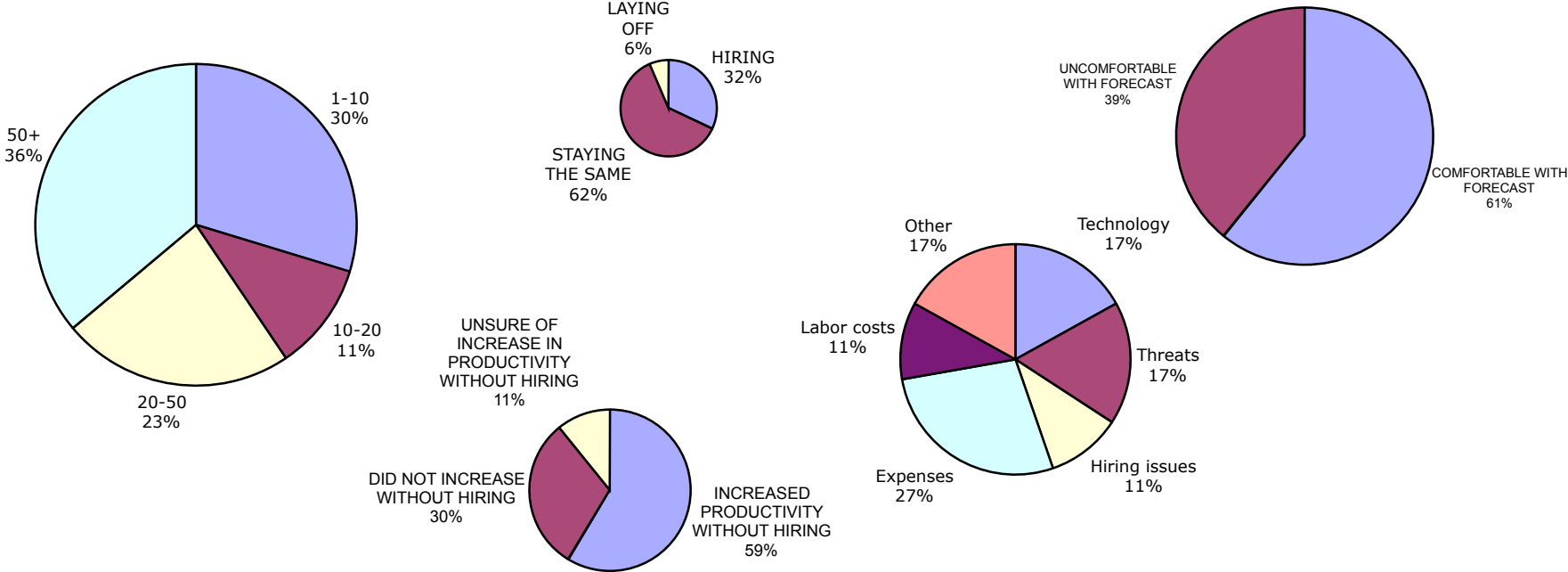
Profitable 2nd Quarter 75% of respondents



Unprofitable 2nd Quarter 25% of respondents



SEMPER SURVEY 2006 Q3 RESPONDENT PROFILE



2005-2006 TRENDS

	Q4 percentage	Q1 percentage	Q2 percentage	CHANGE
PROFITABILITY PREVIOUS QTR				
Profitable	86	87	75	-12
Unprofitable	14	13	25	12
BUSINESS 2 WEEKS BEFORE SURVEY				
Increased	49	33	30	-3
Same	26	48	49	1
Decreased	25	19	21	2
SALES EXPECTATIONS NEXT QTR				
Increase	64	64	72	8
Same	24	26	24	-2
Decrease	12	10	4	-6
CURRENTLY				
Hiring	36	66	32	-34
Same	59	22	62	40
Laying off	12	12	6	-6

SEMPER SURVEY 2006 Q3 CONCERNS

What are the biggest concerns facing your business?

